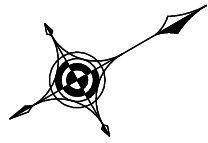


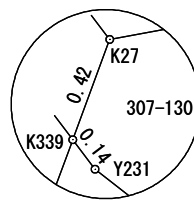
地番 307-1 ~ 307-186

地積測量図

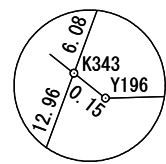
土地の所在 大津市大平二丁目字別所



拡大図1/30

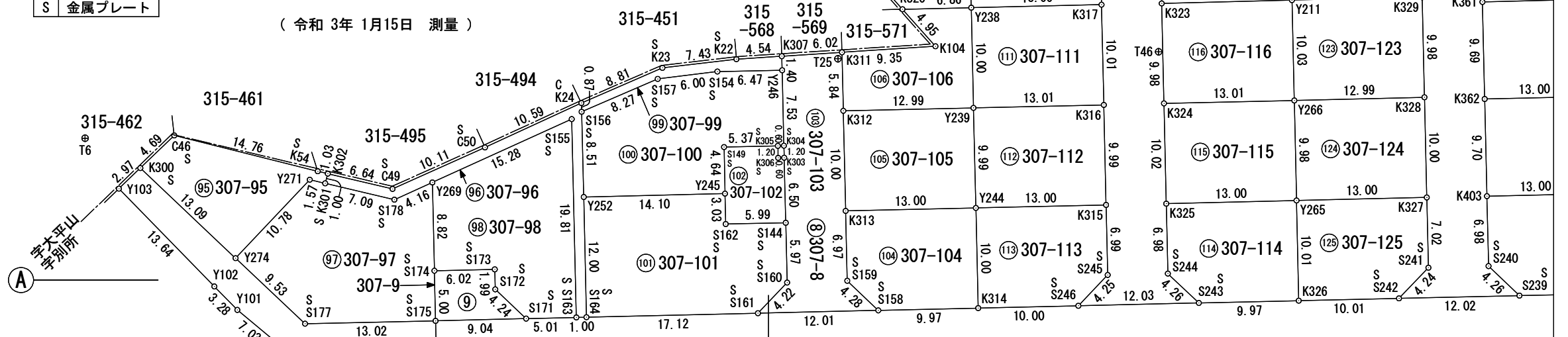


拡大図1/30



境界標の種類	
C	コンクリート杭
D	金属錐
P	プラスチック杭
S	金属プレート

(令和3年1月15日 測量)



作成者

大津市京町二丁目3番14号201号室
土地家屋調査士 嶋谷健児

(令和3年1月22日作成)

申請人

西和不動産株式会社
代表取締役 福島正義

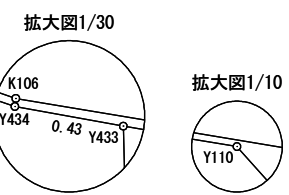
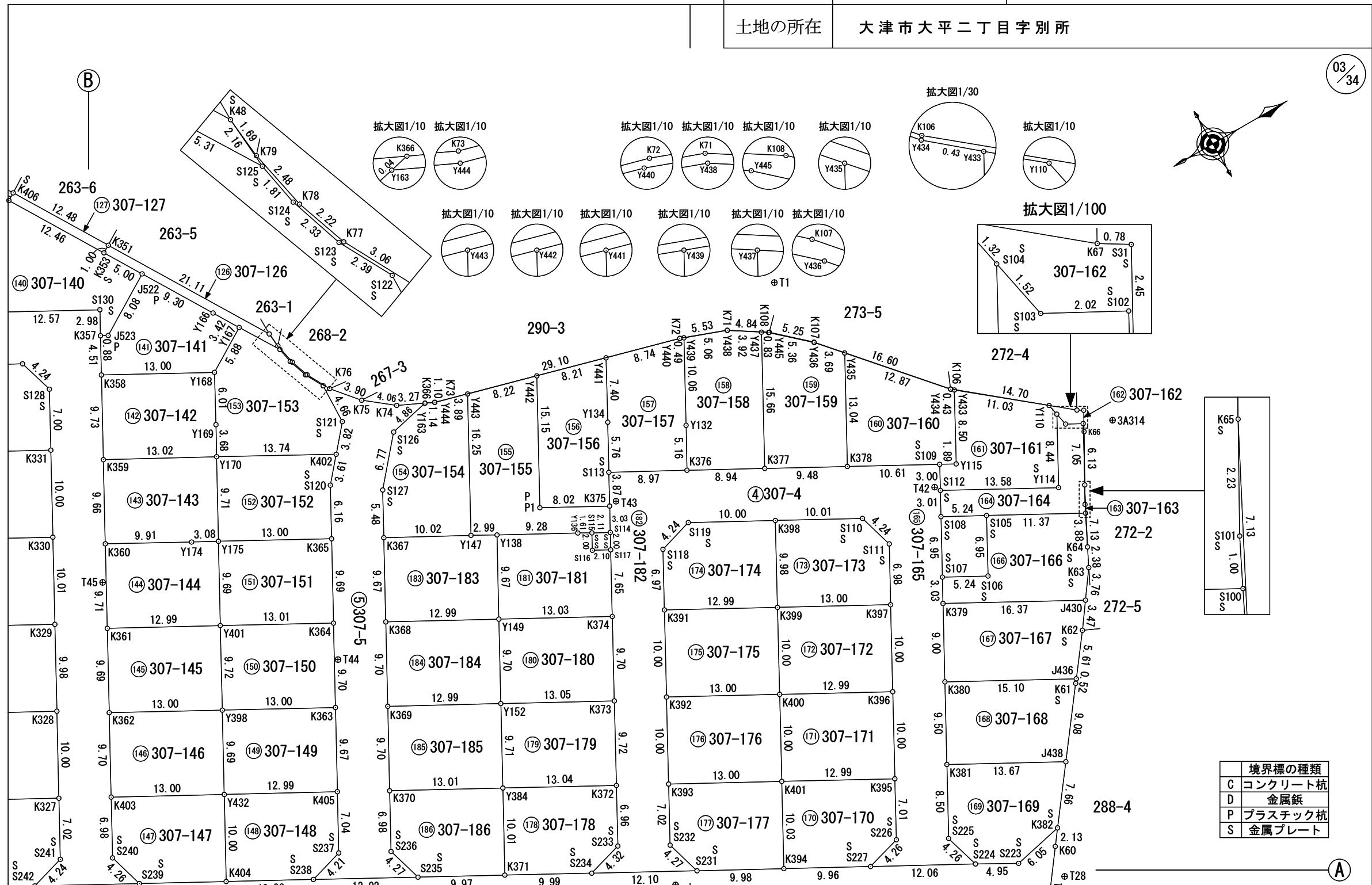
縮尺 1/500

地番 307-1 ~ 307-186

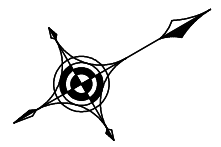
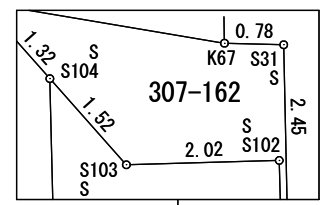
地積測量図

土地の所在 大津市大平二丁目字別所

03/34



拡大図1/100



境界標の種類	
C	コンクリート杭
D	金属釘
P	プラスチック杭
S	金属プレート

(令和 3年 1月15日 測量)

作成者 大津市京町二丁目3番14号201号室
土地家屋調査士 嶋谷健児 (令和 3年 1月 22日作成)

申請人 西和不動産株式会社
代表取締役 福島正義

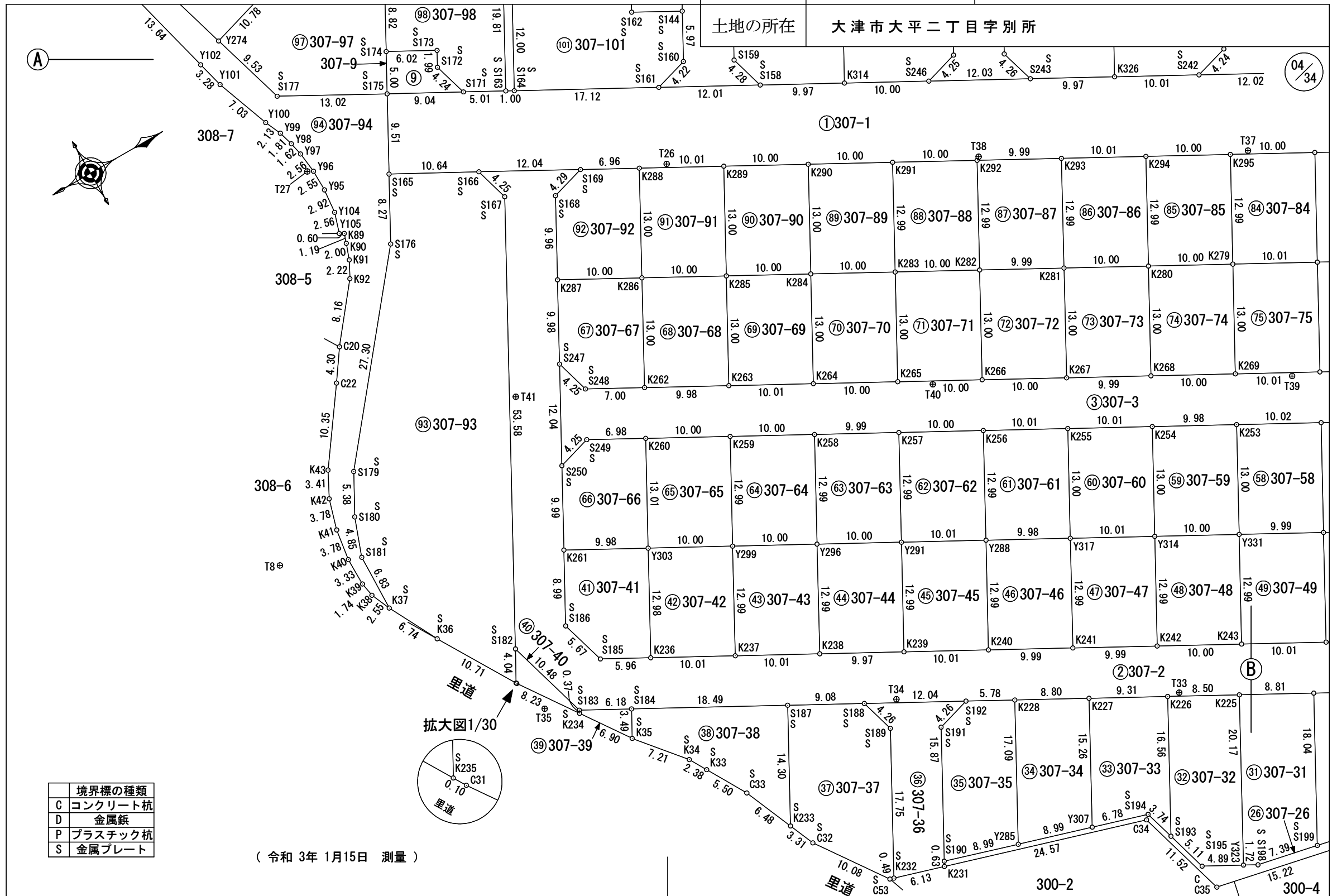
縮尺 1 / 500

地番 307-1 ~ 307-186

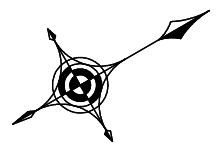
地積測量図

土地の所在 大津市大平二丁目字別所

04/34



A



B

境界標の種類	
C	コンクリート杭
D	金属錐
P	プラスチック杭
S	金属プレート

(令和 3年 1月15日 測量)



作成者 大津市京町二丁目3番14号201号室
 土地家屋調査士 嶋谷健児 (令和 3年 1月 22日作成)

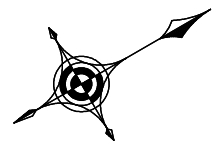
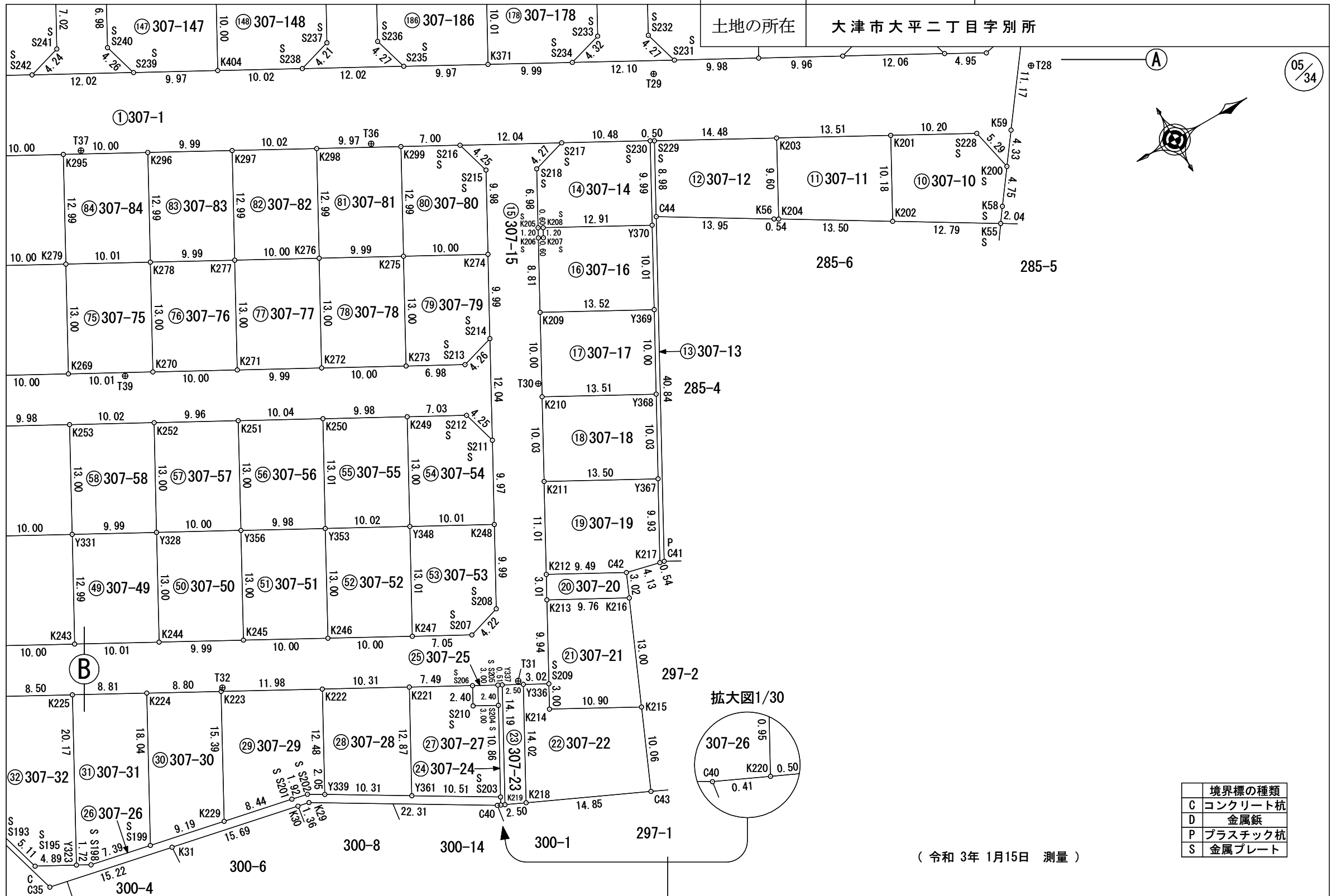
申請人 西和不動産株式会社
 代表取締役 福島正義

縮尺 1/500

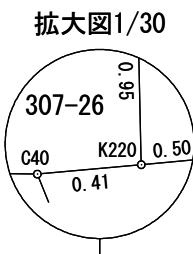
地番 307-1 ~ 307-186

地積測量図

土地の所在 大津市大平二丁目字別所



05/34



境界標の種類	
C	コンクリート杭
D	金属釘
P	プラスチック杭
S	金属プレート

(令和3年1月15日 測量)

作成者 大津市京町二丁目3番14号201号室
 土地家屋調査士 嶋谷健児 (令和3年1月22日作成)

申請人 西和不動産株式会社
 代表取締役 福島正義

縮尺 1 / 500

地番

307-1 ~ 307-186

地積測量図

土地の所在

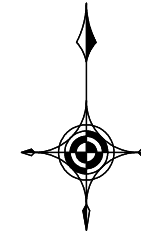
大津市大平二丁目字別所

06/34

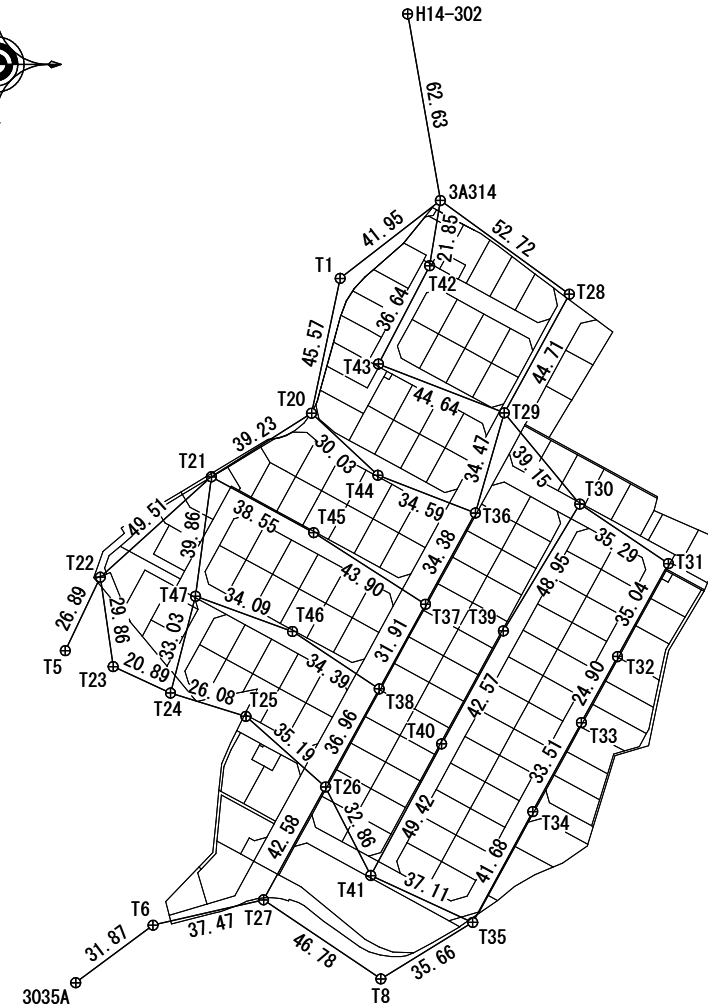
測地系 世界測地系 平面直角座標系の記号 第6系 縮尺係数 0.999901

多角点等座標一覧表

点名	X座標	Y座標	備考
H14-302	-115834.727	-9231.367	二級基準点
3035A	-116155.065	-9341.117	街区三角点
3A314	-115896.415	-9220.530	街区多角補助点
T1	-115922.165	-9253.657	金属板
T5	-116045.266	-9344.547	金属板
T6	-116136.044	-9315.539	プラスチック杭
T8	-116153.806	-9240.214	金属板
T20	-115966.740	-9263.139	金属板
T21	-115987.775	-9296.257	木杭
T22	-116020.980	-9332.985	金属板
T23	-116050.537	-9328.733	金属板
T24	-116059.280	-9309.756	金属板
T25	-116066.988	-9284.834	金属板
T26	-116090.338	-9258.496	金属板
T27	-116127.655	-9279.012	金属板
T28	-115927.407	-9177.876	金属板
T29	-115966.615	-9199.376	金属板
T30	-115996.794	-9174.431	金属板
T31	-116016.471	-9145.125	金属板
T32	-116047.220	-9161.947	金属板
T33	-116069.070	-9173.895	金属板
T34	-116098.473	-9189.973	金属板
T35	-116135.124	-9209.831	金属板
T36	-115999.739	-9208.944	金属板
T37	-116029.911	-9225.435	金属板
T38	-116057.906	-9240.756	金属板
T39	-116038.730	-9199.693	金属板
T40	-116076.087	-9220.119	金属板
T41	-116119.608	-9243.547	金属板
T42	-115917.975	-9224.089	金属板
T43	-115950.486	-9241.002	金属板
T44	-115987.260	-9241.207	金属板
T45	-116006.244	-9262.416	金属板
T46	-116038.912	-9269.431	金属板
T47	-116027.293	-9301.487	金属板



多角点網図



(令和2年12月26日 測量)

作成者

大津市京町二丁目3番14号201号室
土地家屋調査士 嶋谷健児

(令和3年1月22日作成)

申請人

西和不動産株式会社
代表取締役 福島正義

縮尺

1 / 2500

地番

307-1 ~ 307-186

地積測量図

土地の所在

大津市大平二丁目字別所

座標求積表

07/34

地番	① 307-1			
NO	Xn	Yn	Yn+1-Yn-1	Xn · (Yn+1-Yn-1)
K297	-116014.397	-9216.487	9.603	-1114086.254391
K298	-116005.605	-9211.679	9.594	-1112957.774370
K299	-115996.852	-9206.893	8.149	-945258.346948
S216	-115990.702	-9203.530	9.135	-1059575.062770
S217	-115980.132	-9197.758	10.809	-1253629.246788
S230	-115970.932	-9192.721	5.286	-613022.346552
S229	-115970.497	-9192.472	7.200	-834987.578400
K203	-115957.794	-9185.521	13.441	-1558588.709154
K201	-115945.934	-9179.031	11.386	-1320160.404524
S228	-115936.985	-9174.135	10.072	-1167717.312920
K200	-115935.850	-9168.959	1.691	-196047.522350
K59	-115933.276	-9172.444	-12.448	1443137.419648
K60	-115926.609	-9181.407	-10.666	1236473.211594
K382	-115925.319	-9183.110	-0.417	48340.858023
S223	-115931.234	-9181.824	-1.123	130190.775782
S224	-115935.562	-9184.233	-8.188	949280.381656
S227	-115946.150	-9190.012	-10.549	1223115.936350
K394	-115954.903	-9194.782	-9.546	1106905.504038
S231	-115963.668	-9199.558	-10.591	1228171.207788
S234	-115974.281	-9205.373	-10.611	1230603.095691
K371	-115983.048	-9210.169	-9.585	1111697.515080
S235	-115991.799	-9214.958	-10.566	1225569.348234
S238	-116002.342	-9220.735	-10.586	1228000.792412
K404	-116011.143	-9225.544	-9.590	1112546.861370
S239	-116019.894	-9230.325	-10.556	1224706.001064
S242	-116030.445	-9236.100	-10.581	1227718.138545
K326	-116039.230	-9240.906	-9.592	1113048.294160
S243	-116047.977	-9245.692	-10.557	1225118.493189
S246	-116058.537	-9251.463	-10.572	1226970.853164
K314	-116067.311	-9256.264	-9.589	1112969.445179
S158	-116076.063	-9261.052	-10.553	1224950.692839
S161	-116086.610	-9266.817	-13.979	1622774.721190
S164	-116101.637	-9275.031	-8.699	1009968.140263
S163	-116102.518	-9275.516	-2.887	335187.969466
S171	-116106.921	-9277.918	-6.729	781283.471409
S175	-116114.867	-9282.245	4.022	-467013.995074
S165	-116119.427	-9273.896	13.434	-1559948.382318
S166	-116110.071	-9268.811	10.869	-1262000.361699
S169	-116099.509	-9263.027	9.125	-1059408.019625
K288	-116093.398	-9259.686	8.147	-945812.913506
K289	-116084.610	-9254.880	9.604	-1114876.594440
K290	-116075.835	-9250.082	9.597	-1113979.788495
K291	-116067.059	-9245.283	9.601	-1114359.833459
K292	-116058.277	-9240.481	9.596	-1113695.226092
K293	-116049.511	-9235.687	9.598	-1113843.206578
K294	-116040.724	-9230.883	9.604	-1114455.113296
K295	-116031.946	-9226.083	9.601	-1114022.713546
K296	-116023.167	-9221.282	9.596	-1113358.310532
合計				-4075.889693
合計面積				2037.9448465
地積				2037.94 m ²

地番	② 307-2			
NO	Xn	Yn	Yn+1-Yn-1	Xn · (Yn+1-Yn-1)
K222	-116037.050	-9155.895	10.702	-1241828.509100
K221	-116028.003	-9150.945	8.546	-991575.313638
S206	-116021.428	-9147.349	5.040	-584747.997120
S205	-116018.790	-9145.905	1.685	-195491.661150
Y337	-116018.339	-9145.664	1.438	-166834.371482
Y336	-116016.142	-9144.467	2.650	-307442.776300
S209	-116013.488	-9143.014	-7.275	843998.125200
K213	-116008.720	-9151.742	-11.374	1319483.181280
K212	-116007.275	-9154.388	-12.313	1428397.577075
K211	-116001.994	-9164.055	-18.473	2142904.835162
K210	-115997.184	-9172.861	-17.589	2040274.469376
K209	-115992.386	-9181.644	-16.521	1916310.209106
K206	-115988.158	-9189.382	-8.793	1019883.873294
K205	-115987.584	-9190.437	-7.183	833138.815872
S218	-115984.237	-9196.565	-7.321	849120.599077
S217	-115980.132	-9197.758	-6.965	807801.619380
S216	-115990.702	-9203.530	-1.689	195908.295678
S215	-115989.507	-9199.447	12.845	-1489885.217415
K274	-115994.299	-9190.685	17.528	-2033148.072872
S214	-115999.094	-9181.919	19.341	-2243538.477054
S211	-116004.856	-9171.344	19.329	-2242257.861624
K248	-116009.648	-9162.590	17.524	-2032953.071552
S208	-116014.448	-9153.820	10.002	-1160376.508896
S207	-116018.492	-9152.588	-2.154	249903.831768
K247	-116024.682	-9155.974	-8.188	950010.096216
K246	-116033.459	-9160.776	-9.606	1114617.407154
K245	-116042.240	-9165.580	-9.601	1114121.546240
K244	-116051.010	-9170.377	-9.602	1114321.798020
K243	-116059.794	-9175.182	-9.607	1114986.440958
K242	-116068.571	-9179.984	-9.598	1114026.144458
K241	-116077.337	-9184.780	-9.594	1113645.971178
K240	-116086.109	-9189.578	-9.604	1114890.990836
K239	-116094.893	-9194.384	-9.593	1113698.308549
K238	-116103.648	-9199.171	-9.590	1113433.984320
K237	-116112.433	-9203.974	-9.606	1115376.031398
K236	-116121.225	-9208.777	-7.662	889720.825950
S185	-116126.460	-9211.636	-8.305	964430.250300
S186	-116128.067	-9217.082	-13.336	1548683.901512
K261	-116123.755	-9224.972	-16.658	1934389.510790
S250	-116118.963	-9233.740	-19.336	2245276.268568
S247	-116113.186	-9244.308	-19.332	2244700.111752
K287	-116108.402	-9253.072	-17.517	2033870.877834
S168	-116103.635	-9261.825	-9.955	1155811.686425
S169	-116099.509	-9263.027	-6.986	811071.169874
S166	-116110.071	-9268.811	-1.695	196806.570345
S167	-116108.897	-9264.722	51.117	-5935138.487949
S182	-116134.580	-9217.694	57.095	-6630703.845100
S183	-116131.654	-9207.627	13.030	-1513195.451620
S184	-116126.227	-9204.664	11.830	-1373773.265410
S187	-116109.993	-9195.797	13.229	-1536019.097397
S188	-116102.020	-9191.435	10.143	-1177622.788860

作成者

大津市京町二丁目3番14号201号室
土地家屋調査士 嶋谷健児

(令和3年1月22日作成)

申請人

西和不動産株式会社
代表取締役 福島正義

縮尺

1/

地 番

307-1 ~ 307-186

地 積 測 量 図

土地の所在

大津市大平二丁目字別所

S192	-116091.451	-9185.654	8.555	-993162.363305
K228	-116086.379	-9182.880	6.998	-812372.480242
K227	-116078.658	-9178.656	8.694	-1009187.852652
K226	-116070.486	-9174.186	8.550	-992402.655300
K225	-116063.028	-9170.106	8.311	-964599.825708
K224	-116055.294	-9165.875	8.459	-981711.731946
K223	-116047.566	-9161.647	9.980	-1158154.708680
合 計				-3109.067427
合 計 面 積				1554.5337135
② 307-2			地 積	1554.53 m ²

地 番	NO	Xn	Yn	Yn+1-Yn-1	Xn · (Yn+1-Yn-1)
	S211	-116004.856	-9171.344	-6.490	752871.515440
	S214	-115999.094	-9181.919	-9.381	1088187.500814
	S213	-116003.186	-9180.725	-2.157	250218.872202
	K273	-116009.314	-9184.076	-8.151	945591.918414
	K272	-116018.095	-9188.876	-9.595	1113193.621525
	K271	-116026.865	-9193.671	-9.593	1113045.715945
	K270	-116035.640	-9198.469	-9.602	1114174.215280
	K269	-116044.428	-9203.273	-9.602	1114258.597656
	K268	-116053.204	-9208.071	-9.595	1113530.492380
	K267	-116061.978	-9212.868	-9.595	1113614.678910
	K266	-116070.754	-9217.666	-9.597	1113931.026138
	K265	-116079.532	-9222.465	-9.598	1114131.348136
	K264	-116088.309	-9227.264	-9.601	1114563.854709
	K263	-116097.093	-9232.066	-9.594	1113835.510242
	K262	-116105.858	-9236.858	-8.153	946611.060274
	S248	-116112.005	-9240.219	-7.450	865034.437250
	S247	-116113.186	-9244.308	6.479	-752297.332094
	S250	-116118.963	-9233.740	9.370	-1088034.683310
	S249	-116114.877	-9234.938	2.157	-250459.789689
	K260	-116108.745	-9231.583	8.159	-947331.250455
	K259	-116099.966	-9226.779	9.604	-1115024.073464
	K258	-116091.193	-9221.979	9.591	-1113430.632063
	K257	-116082.424	-9217.188	9.585	-1112650.034040
	K256	-116073.648	-9212.394	9.597	-1113958.799856
	K255	-116064.864	-9207.591	9.607	-1115035.148448
	K254	-116056.075	-9202.787	9.596	-1113674.095700
	K253	-116047.310	-9197.995	9.599	-1113938.128690
	K252	-116038.518	-9193.188	9.586	-1112345.233548
	K251	-116029.777	-9188.409	9.595	-1113305.710315
	K250	-116020.967	-9183.593	9.606	-1114497.409002
	K249	-116012.205	-9178.803	8.164	-947123.641620
	S212	-116006.034	-9175.429	7.459	-865289.007606
合 計				-1600.604585	
合 計 面 積				800.3022925	
地 積				800.30 m ²	

地 番	NO	Xn	Yn	Yn+1-Yn-1	Xn · (Yn+1-Yn-1)
	K397	-115929.107	-9214.916	14.913	-1728850.772691
	K396	-115933.904	-9206.136	17.565	-2036379.023760
	K395	-115938.692	-9197.351	14.942	-1732355.935864
	S226	-115942.048	-9191.194	7.339	-850898.690272
	S227	-115946.150	-9190.012	6.961	-807101.150150
	S224	-115935.562	-9184.233	1.691	-196047.035342
	S225	-115936.770	-9188.321	-11.549	1338953.756730
	K381	-115932.695	-9195.782	-15.803	1832084.379085
	K380	-115928.139	-9204.124	-16.245	1883252.618055
	K379	-115923.823	-9212.027	-10.565	1224735.189995
	S107	-115922.369	-9214.689	-8.764	1015943.641916
	S108	-115919.040	-9220.791	-8.746	1013827.923840
	S112	-115917.593	-9223.435	-5.281	612160.808633
	S109	-115916.160	-9226.072	-7.728	895800.084480
	K378	-115925.475	-9231.163	-9.641	1117637.504475
	K377	-115933.802	-9235.713	-8.841	1024970.743482
	K376	-115941.655	-9240.004	-8.571	993735.925005
	S113	-115949.544	-9244.284	-0.876	101571.800544
	K375	-115951.402	-9240.880	6.066	-703361.204532
	S114	-115952.855	-9238.218	4.418	-512279.713390
	S117	-115953.817	-9236.462	8.479	-983172.414343
	K374	-115957.485	-9229.739	15.247	-1768003.773795
	K373	-115962.134	-9221.215	17.057	-1977966.119638
	K372	-115966.789	-9212.682	14.645	-1698333.624905
	S233	-115970.123	-9206.570	7.309	-847625.629007
	S234	-115974.281	-9205.373	7.012	-813211.658372
	S231	-115963.668	-9199.558	1.718	-199225.581624
	S232	-115964.874	-9203.655	-10.267	1190611.361358
	K393	-115961.507	-9209.825	-14.953	1733972.414171
	K392	-115956.715	-9218.608	-17.566	2036895.655690
	K391	-115951.923	-9227.391	-14.904	1728147.460392
	S118	-115948.584	-9233.512	-7.328	849671.223552
	S119	-115944.519	-9234.719	3.589	-416124.878691
	K398	-115935.740	-9229.923	9.596	-1112519.361040
	S110	-115926.953	-9225.123	8.874	-1028735.780922
	S111	-115925.755	-9221.049	10.207	-1183254.181285
合 計				-1474.038220	
合 計 面 積				737.0191100	
地 積				737.01 m ²	

作成者

大津市京町二丁目3番14号201号室
土地家屋調査士 嶋谷健児

(令和 3 年 1 月 22 日作成)

申請人

西和不動産株式会社
代表取締役 福島正義

縮尺

1/

地 番

307-1 ~ 307-186

地 積 測 量 図

土地の所在

大津市大平二丁目字別所

09/34

地 番	⑤ 307-5			
NO	Xn	Yn	Yn+1-Yn-1	Xn · (Yn+1-Yn-1)
S235	-115991.799	-9214.958	1.674	-194170.271526
S236	-115993.009	-9219.061	-10.226	1186144.510034
K370	-115989.656	-9225.184	-14.637	1697740.594872
K369	-115984.994	-9233.698	-17.027	1974876.492838
K368	-115980.340	-9242.211	-17.006	1972361.662040
K367	-115975.697	-9250.704	-13.309	1543520.551373
S127	-115973.064	-9255.520	-9.949	1153816.013736
S126	-115968.642	-9260.653	-6.208	719933.329536
Y163	-115963.897	-9261.728	-1.085	125820.828245
K366	-115963.851	-9261.738	-1.404	162813.246804
K74	-115966.812	-9263.132	-3.920	454589.903040
K75	-115970.000	-9265.658	-5.518	639922.460000
K76	-115972.517	-9268.650	-5.690	659883.621730
K77	-115973.966	-9271.348	-4.795	556095.166970
K78	-115974.710	-9273.445	-4.534	525829.335140
K79	-115975.216	-9275.882	-4.125	478397.766000
K48	-115975.386	-9277.570	0.468	-54276.480648
S125	-115975.221	-9275.414	3.935	-456362.494635
S124	-115974.883	-9273.635	3.993	-463087.707819
S123	-115974.136	-9271.421	4.327	-501820.086472
S122	-115973.003	-9269.308	6.778	-786065.014334
S121	-115973.147	-9264.643	7.564	-877220.883908
K402	-115975.642	-9261.744	5.639	-653986.645238
S120	-115978.000	-9259.004	8.145	-944640.810000
K365	-115980.957	-9253.599	13.910	-1613295.111870
K364	-115985.611	-9245.094	17.016	-1973611.156776
K363	-115990.268	-9236.583	16.998	-1971602.575464
K405	-115994.912	-9228.096	14.664	-1700949.389568
S237	-115998.292	-9221.919	7.361	-853863.427412
S238	-116002.342	-9220.735	6.961	-807492.302662
合 計				-698.875974
合 計 面 積				349.4379870
地 積				349.43 m ²

地 番	⑥ 307-6			
NO	Xn	Yn	Yn+1-Yn-1	Xn · (Yn+1-Yn-1)
S239	-116019.894	-9230.325	1.676	-194449.342344
S240	-116021.089	-9234.424	-10.230	1186895.740470
K403	-116017.736	-9240.555	-14.648	1699427.796928
K362	-116013.078	-9249.072	-17.021	1974658.600638
K361	-116008.427	-9257.576	-17.030	1975623.511810
K360	-116003.763	-9266.102	-17.010	1973224.008630
K359	-115999.123	-9274.586	-17.026	1975001.068198
K358	-115994.451	-9283.128	-12.505	1450510.609755
K357	-115992.284	-9287.091	-6.578	762997.244152
S130	-115990.853	-9289.706	-8.648	1003088.896744
K356	-116001.886	-9295.739	-10.182	1181131.203252
K349	-116009.474	-9299.888	-9.326	1081904.354524
K348	-116018.943	-9305.065	-6.618	767813.364774
K347	-116021.578	-9306.506	-2.882	334374.187796
S133	-116024.213	-9307.947	4.698	-545081.752674
S170	-116027.586	-9301.808	16.660	-1933019.582760
S136	-116033.321	-9291.287	16.682	-1935667.860922
K318	-116036.693	-9285.126	14.933	-1732775.936569
K317	-116041.494	-9276.354	17.559	-2037572.593146
K316	-116046.304	-9267.567	17.551	-2036728.681504
K315	-116051.101	-9258.803	14.901	-1729277.456001
S245	-116054.460	-9252.666	7.340	-851839.736400
S246	-116058.537	-9251.463	6.974	-809392.237038
S243	-116047.977	-9245.692	1.680	-194960.601360
S244	-116049.192	-9249.783	-10.218	1185790.643856
K325	-116045.838	-9255.910	-14.916	1730939.719608
K324	-116041.025	-9264.699	-17.549	2036403.947725
K323	-116036.229	-9273.459	-17.542	2035507.529118
K322	-116031.425	-9282.241	-17.573	2039020.231525
K321	-116026.617	-9291.032	-14.920	1731117.125640
S135	-116023.275	-9297.161	-7.329	850334.582475
S134	-116019.184	-9298.361	3.593	-416856.928112
K332	-116010.421	-9293.568	9.589	-1112423.926969
S129	-116001.653	-9288.772	8.862	-1028006.648886
S128	-116000.439	-9284.706	10.216	-1185060.484824
K331	-116003.802	-9278.556	14.932	-1732168.771464
K330	-116008.603	-9269.774	17.573	-2038619.180519
K329	-116013.410	-9260.983	17.551	-2036151.358910
K328	-116018.200	-9252.223	17.539	-2034843.209800
K327	-116023.001	-9243.444	14.939	-1733267.611939
S241	-116026.369	-9237.284	7.344	-852097.653936
S242	-116030.445	-9236.100	6.959	-807455.866755
合 計				-1953.055214
合 計 面 積				976.5276070
地 積				976.52 m ²

作成者

大津市京町二丁目3番14号201号室
土地家屋調査士 嶋谷健児

(令和 3 年 1 月 22 日作成)

申請人

西和不動産株式会社
代表取締役 福島正義

縮尺

1/

地番

307-1 ~ 307-186

地積測量図

土地の所在

大津市大平二丁目字別所

10/34

地番	㉗ 307-7				
NO	Xn	Yn	Yn+1-Yn-1	Xn · (Yn+1-Yn-1)	
S136	-116033.321	-9291.287	-6.415	744353.754215	
S170	-116027.586	-9301.808	-9.345	1084277.791170	
S132	-116031.603	-9300.632	-3.886	450898.809258	
K345	-116040.855	-9305.694	-10.256	1190115.008880	
S140	-116050.347	-9310.888	4.573	-530698.236831	
K105	-116062.073	-9301.121	15.700	-1822174.546100	
K309	-116060.849	-9295.188	3.499	-406096.910651	
K308	-116059.518	-9297.622	-8.566	994165.831188	
S143	-116056.165	-9303.754	-7.338	851620.138770	
S142	-116052.037	-9304.960	3.578	-415234.188386	
K319	-116043.292	-9300.176	9.567	-1110186.174564	
S137	-116034.548	-9295.393	8.889	-1031431.097172	
合計			-389.820223		
合計面積			194.9101115		
地積			194.91	㎡	

地番	㉘ 307-8				
NO	Xn	Yn	Yn+1-Yn-1	Xn · (Yn+1-Yn-1)	
K311	-116066.316	-9285.188	-7.793	904504.800588	
K307	-116071.713	-9287.856	-1.435	166562.908155	
Y246	-116072.379	-9286.623	7.846	-910703.885634	
K304	-116075.999	-9280.010	7.667	-889954.684333	
K303	-116076.574	-9278.956	6.760	-784677.640240	
S144	-116079.690	-9273.250	10.946	-1270608.286740	
S160	-116082.555	-9268.010	6.433	-746759.076315	
S161	-116086.610	-9266.817	6.958	-807730.632380	
S158	-116076.063	-9261.052	1.655	-192105.884265	
S159	-116077.267	-9265.162	-10.233	1187818.673211	
K313	-116073.918	-9271.285	-14.901	1729617.452118	
K312	-116069.119	-9280.063	-13.903	1613708.961457	
合計			-327.294378		
合計面積			163.6471890		
地積			163.64	㎡	

地番	㉙ 307-9				
NO	Xn	Yn	Yn+1-Yn-1	Xn · (Yn+1-Yn-1)	
S175	-116114.867	-9282.245	8.720	-1012521.640240	
S171	-116106.921	-9277.918	0.253	-29375.051013	
S172	-116108.130	-9281.992	-5.829	676794.289770	
S173	-116107.171	-9283.747	-4.646	539433.916466	
S174	-116112.460	-9286.638	1.502	-174400.914920	
合計			-69.399937		
合計面積			34.6999685		
地積			34.69	㎡	

地番	㉚ 307-10				
NO	Xn	Yn	Yn+1-Yn-1	Xn · (Yn+1-Yn-1)	
K55	-115939.873	-9163.477	4.966	-575757.409318	
K58	-115938.678	-9165.131	-5.482	635575.832796	
K200	-115935.850	-9168.959	-9.004	1043886.393400	
S228	-115936.985	-9174.135	-10.072	1167717.312920	
K201	-115945.934	-9179.031	4.038	-468189.681492	
K202	-115950.828	-9170.097	15.554	-1803499.178712	
合計			-266.730406		
合計面積			133.3652030		
地積			133.36	㎡	

地番	㉛ 307-11				
NO	Xn	Yn	Yn+1-Yn-1	Xn · (Yn+1-Yn-1)	
K202	-115950.828	-9170.097	-1.948	225872.212944	
K201	-115945.934	-9179.031	-15.424	1788350.086016	
K203	-115957.794	-9185.521	1.948	-225885.782712	
K204	-115962.388	-9177.083	15.424	-1788603.872512	
合計			-267.356264		
合計面積			133.6781320		
地積			133.67	㎡	

地番	㉜ 307-12				
NO	Xn	Yn	Yn+1-Yn-1	Xn · (Yn+1-Yn-1)	
K204	-115962.388	-9177.083	-8.156	945789.236528	
K203	-115957.794	-9185.521	-15.389	1784474.491866	
S229	-115970.497	-9192.472	0.937	-108664.355689	
C44	-115974.802	-9184.584	15.107	-1752031.333814	
K56	-115962.856	-9177.365	7.501	-869837.382856	
合計			-269.343965		
合計面積			134.6719825		
地積			134.67	㎡	

地番	㉝ 307-13				
NO	Xn	Yn	Yn+1-Yn-1	Xn · (Yn+1-Yn-1)	
Y368	-115985.323	-9166.376	17.580	-2039021.978340	
Y367	-115990.144	-9157.576	17.505	-2030407.470720	
K217	-115994.924	-9148.871	8.830	-1024235.178920	
C41	-115994.397	-9148.746	-35.713	4142507.900061	
C44	-115974.802	-9184.584	-43.726	5071114.192252	
S229	-115970.497	-9192.472	-8.137	943651.934089	
S230	-115970.932	-9192.721	8.521	-988188.311572	
Y370	-115975.726	-9183.951	17.565	-2037113.627190	
Y369	-115980.519	-9175.156	17.575	-2038357.621425	
合計			-50.161765		
合計面積			25.0808825		
地積			25.08	㎡	

作成者

大津市京町二丁目3番14号201号室

土地家屋調査士

嶋谷健児

(令和3年1月22日作成)

申請人

西和不動産株式会社
代表取締役 福島正義

縮尺

1

地番

307-1 ~ 307-186

地積測量図

土地の所在

大津市大平二丁目字別所

11/34

地番	⑭ 307-14				
NO	Xn	Yn	Yn+1-Yn-1	Xn · (Yn+1-Yn-1)	
Y370	-115975.726	-9183.951	-2.572	298289.567272	
S230	-115970.932	-9192.721	-13.807	1601210.658124	
S217	-115980.132	-9197.758	-3.844	445827.627408	
S218	-115984.237	-9196.565	7.321	-849120.599077	
K205	-115987.584	-9190.437	6.416	-744176.338944	
K208	-115987.056	-9190.149	6.486	-752292.045216	
合計				-261.130433	
合計面積				130.5652165	
地積				130.56 m ²	

地番	⑮ 307-15				
NO	Xn	Yn	Yn+1-Yn-1	Xn · (Yn+1-Yn-1)	
K205	-115987.584	-9190.437	0.767	-88962.476928	
K206	-115988.158	-9189.382	1.344	-155888.084352	
K207	-115987.629	-9189.093	-0.767	88962.511443	
K208	-115987.056	-9190.149	-1.344	155886.603264	
合計				-1.446573	
合計面積				0.7232865	
地積				0.72 m ²	

地番	⑯ 307-16				
NO	Xn	Yn	Yn+1-Yn-1	Xn · (Yn+1-Yn-1)	
Y370	-115975.726	-9183.951	-14.993	1738824.059918	
K208	-115987.056	-9190.149	-5.142	596405.441952	
K207	-115987.629	-9189.093	0.767	-88962.511443	
K206	-115988.158	-9189.382	7.449	-863995.788942	
K209	-115992.386	-9181.644	14.226	-1650107.683236	
Y369	-115980.519	-9175.156	-2.307	267567.057333	
合計				-269.424418	
合計面積				134.7122090	
地積				134.71 m ²	

地番	⑰ 307-17				
NO	Xn	Yn	Yn+1-Yn-1	Xn · (Yn+1-Yn-1)	
Y369	-115980.519	-9175.156	-15.268	1770790.564092	
K209	-115992.386	-9181.644	2.295	-266202.525870	
K210	-115997.184	-9172.861	15.268	-1771045.005312	
Y368	-115985.323	-9166.376	-2.295	266186.316285	
合計				-270.650805	
合計面積				135.3254025	
地積				135.32 m ²	

地番	⑱ 307-18				
NO	Xn	Yn	Yn+1-Yn-1	Xn · (Yn+1-Yn-1)	
Y368	-115985.323	-9166.376	-15.285	1772835.662055	
K210	-115997.184	-9172.861	2.321	-269229.464064	
K211	-116001.994	-9164.055	15.285	-1773090.478290	
Y367	-115990.144	-9157.576	-2.321	269213.124224	
合計				-271.156075	
合計面積				135.5780375	
地積				135.57 m ²	

地番	⑲ 307-19				
NO	Xn	Yn	Yn+1-Yn-1	Xn · (Yn+1-Yn-1)	
Y367	-115990.144	-9157.576	-15.184	1761194.346496	
K211	-116001.994	-9164.055	3.188	-369814.356872	
K212	-116007.275	-9154.388	14.223	-1649971.472325	
C42	-115998.942	-9149.832	5.517	-639966.163014	
K217	-115994.924	-9148.871	-7.744	898264.691456	
合計				-292.954259	
合計面積				146.4771295	
地積				146.47 m ²	

地番	⑳ 307-20				
NO	Xn	Yn	Yn+1-Yn-1	Xn · (Yn+1-Yn-1)	
K216	-116000.154	-9147.059	1.910	-221560.294140	
C42	-115998.942	-9149.832	-7.329	850156.245918	
K212	-116007.275	-9154.388	-1.910	221573.895250	
K213	-116008.720	-9151.742	7.329	-850227.908880	
合計				-58.061852	
合計面積				29.0309260	
地積				29.03 m ²	

地番	㉑ 307-21				
NO	Xn	Yn	Yn+1-Yn-1	Xn · (Yn+1-Yn-1)	
K215	-116005.360	-9135.143	-6.683	775263.820880	
K216	-116000.154	-9147.059	-16.599	1925486.556246	
K213	-116008.720	-9151.742	4.045	-469255.272400	
S209	-116013.488	-9143.014	11.366	-1318609.304608	
K214	-116014.931	-9140.376	7.871	-913153.521901	
合計				-267.721783	
合計面積				133.8608915	
地積				133.86 m ²	

作成者

大津市京町二丁目3番14号201号室
土地家屋調査士 嶋谷健児

(令和3年1月22日作成)

申請人

西和不動産株式会社
代表取締役 福島正義

縮尺

1

地 番

307-1 ~ 307-186

地 積 測 量 図

土地の所在

大津市大平二丁目字別所

地 番	㉔ 307-22			
NO	Xn	Yn	Yn+1-Yn-1	Xn · (Yn+1-Yn-1)
K214	-116014.931	-9140.376	-7.871	913153.521901
S209	-116013.488	-9143.014	-4.091	474611.179408
Y336	-116016.142	-9144.467	10.855	-1259355.221410
K218	-116022.874	-9132.159	18.543	-2151412.152582
C43	-116009.387	-9125.924	-2.984	346172.010808
K215	-116005.360	-9135.143	-14.452	1676509.462720
合 計				-321.199155
合 計 面 積				160.5995775
地 積				160.59 m ²

地 番	㉕ 307-23			
NO	Xn	Yn	Yn+1-Yn-1	Xn · (Yn+1-Yn-1)
K218	-116022.874	-9132.159	-11.255	1305837.446870
Y336	-116016.142	-9144.467	-13.505	1566797.997710
Y337	-116018.339	-9145.664	11.255	-1305786.405445
K219	-116025.152	-9133.212	13.505	-1566919.677760
合 計				-70.638625
合 計 面 積				35.3193125
地 積				35.31 m ²

地 番	㉖ 307-24			
NO	Xn	Yn	Yn+1-Yn-1	Xn · (Yn+1-Yn-1)
K219	-116025.152	-9133.212	-12.242	1420379.910784
Y337	-116018.339	-9145.664	-12.693	1472620.776927
S205	-116018.790	-9145.905	1.872	-217187.174880
S204	-116019.942	-9143.792	11.648	-1351400.284416
S203	-116025.149	-9134.257	10.370	-1203180.795130
K220	-116025.605	-9133.422	1.045	-121246.757225
合 計				-14.323940
合 計 面 積				7.1619700
地 積				7.16 m ²

地 番	㉗ 307-25			
NO	Xn	Yn	Yn+1-Yn-1	Xn · (Yn+1-Yn-1)
S204	-116019.942	-9143.792	-0.668	77501.321256
S205	-116018.790	-9145.905	-3.557	412678.836030
S206	-116021.428	-9147.349	0.668	-77502.313904
S210	-116022.572	-9145.237	3.557	-412692.288604
合 計				-14.445222
合 計 面 積				7.2226110
地 積				7.22 m ²

地 番	㉘ 307-26			
NO	Xn	Yn	Yn+1-Yn-1	Xn · (Yn+1-Yn-1)
K30	-116046.479	-9145.320	3.527	-409295.931433
K29	-116045.139	-9145.037	11.725	-1360629.254775
C40	-116025.981	-9133.595	11.615	-1347641.769315
K220	-116025.605	-9133.422	-0.662	76808.950510
S203	-116025.149	-9134.257	-6.222	721908.477078
Y361	-116034.179	-9139.644	-10.681	1239361.065899
Y339	-116043.032	-9144.938	-6.333	734900.521656
S202	-116044.808	-9145.977	-1.460	169425.419680
S201	-116046.688	-9146.398	-2.164	251125.032832
K229	-116054.950	-9148.141	-3.641	422556.072950
S199	-116063.948	-9150.039	-3.422	397170.830056
S198	-116071.182	-9151.563	-2.358	273695.847156
Y323	-116072.696	-9152.397	-3.170	367950.446320
S195	-116077.003	-9154.733	-7.251	841674.348753
S193	-116078.423	-9159.648	-8.515	988407.771845
S194	-116079.471	-9163.248	-5.598	649812.878658
Y307	-116085.959	-9165.246	-4.623	536665.388457
Y285	-116094.560	-9167.871	-5.275	612398.804000
S190	-116103.158	-9170.521	-2.096	243352.219168
K231	-116103.460	-9169.967	7.749	-899685.711540
C34	-116079.958	-9162.772	18.256	-2119155.713248
C35	-116076.732	-9151.711	14.208	-1649218.208256
K31	-116061.835	-9148.564	6.391	-741751.187485
合 計				-163.701034
合 計 面 積				81.8505170
地 積				81.85 m ²

地 番	㉙ 307-27			
NO	Xn	Yn	Yn+1-Yn-1	Xn · (Yn+1-Yn-1)
S203	-116025.149	-9134.257	-4.148	481272.318052
S204	-116019.942	-9143.792	-10.980	1273898.963160
S210	-116022.572	-9145.237	-3.557	412692.288604
S206	-116021.428	-9147.349	-5.708	662250.311024
K221	-116028.003	-9150.945	7.705	-893995.763115
Y361	-116034.179	-9139.644	16.688	-1936378.379152
合 計				-260.261427
合 計 面 積				130.1307135
地 積				130.13 m ²

地 番	㉚ 307-28			
NO	Xn	Yn	Yn+1-Yn-1	Xn · (Yn+1-Yn-1)
Y361	-116034.179	-9139.644	-6.007	697017.313253
K221	-116028.003	-9150.945	-16.251	1885571.076753
K222	-116037.050	-9155.895	6.007	-697034.559350
Y339	-116043.032	-9144.938	16.251	-1885815.313032
合 計				-261.482376
合 計 面 積				130.7411880
地 積				130.74 m ²

作成者

大津市京町二丁目3番14号201号室
土地家屋調査士 嶋谷健児

(令和 3 年 1 月 22 日作成)

申請人

西和不動産株式会社
代表取締役 福島正義

縮尺

1/

地番

307-1 ~ 307-186

地積測量図

土地の所在

大津市大平二丁目字別所

13/34

地番	㊸ 307-29			
NO	Xn	Yn	Yn+1-Yn-1	Xn · (Yn+1-Yn-1)
Y339	-116043.032	-9144.938	-9.918	1150914.791376
K222	-116037.050	-9155.895	-16.709	1938863.068450
K223	-116047.566	-9161.647	7.754	-899832.826764
K229	-116054.950	-9148.141	15.249	-1769721.932550
S201	-116046.688	-9146.398	2.164	-251125.032832
S202	-116044.808	-9145.977	1.460	-169425.419680
合計				-327.352000
合計面積				163.6760000
地積				163.67 m ²

地番	㊸ 307-33			
NO	Xn	Yn	Yn+1-Yn-1	Xn · (Yn+1-Yn-1)
S193	-116078.423	-9159.648	-10.938	1269665.790774
K226	-116070.486	-9174.186	-19.008	2206267.797888
K227	-116078.658	-9178.656	8.940	-1037743.202520
Y307	-116085.959	-9165.246	15.408	-1788652.456272
S194	-116079.471	-9163.248	5.598	-649812.878658
合計				-274.948788
合計面積				137.4743940
地積				137.47 m ²

地番	㊸ 307-30			
NO	Xn	Yn	Yn+1-Yn-1	Xn · (Yn+1-Yn-1)
K229	-116054.950	-9148.141	-11.608	1347165.859600
K223	-116047.566	-9161.647	-17.734	2057987.535444
K224	-116055.294	-9165.875	11.608	-1347169.852752
S199	-116063.948	-9150.039	17.734	-2058278.053832
合計				-294.511540
合計面積				147.2557700
地積				147.25 m ²

地番	㊸ 307-34			
NO	Xn	Yn	Yn+1-Yn-1	Xn · (Yn+1-Yn-1)
Y307	-116085.959	-9165.246	-10.785	1251987.067815
K227	-116078.658	-9178.656	-17.634	2046931.055172
K228	-116086.379	-9182.880	10.785	-1251991.597515
Y285	-116094.560	-9167.871	17.634	-2047211.471040
合計				-284.945568
合計面積				142.4727840
地積				142.47 m ²

地番	㊸ 307-31			
NO	Xn	Yn	Yn+1-Yn-1	Xn · (Yn+1-Yn-1)
S199	-116063.948	-9150.039	-14.312	1661107.223776
K224	-116055.294	-9165.875	-20.067	2328881.584698
K225	-116063.028	-9170.106	13.478	-1564297.491384
Y323	-116072.696	-9152.397	18.543	-2152336.001928
S198	-116071.182	-9151.563	2.358	-273695.847156
合計				-340.531994
合計面積				170.2659970
地積				170.26 m ²

地番	㊸ 307-35			
NO	Xn	Yn	Yn+1-Yn-1	Xn · (Yn+1-Yn-1)
Y285	-116094.560	-9167.871	-12.359	1434812.667040
K228	-116086.379	-9182.880	-17.783	2064364.077757
S192	-116091.451	-9185.654	-1.576	182960.126776
S191	-116095.545	-9184.456	15.133	-1756873.882485
S190	-116103.158	-9170.521	16.585	-1925570.875430
合計				-307.886342
合計面積				153.9431710
地積				153.94 m ²

地番	㊸ 307-32			
NO	Xn	Yn	Yn+1-Yn-1	Xn · (Yn+1-Yn-1)
Y323	-116072.696	-9152.397	-15.373	1784385.555608
K225	-116063.028	-9170.106	-21.789	2528897.317092
K226	-116070.486	-9174.186	10.458	-1213865.142588
S193	-116078.423	-9159.648	19.453	-2258073.562619
S195	-116077.003	-9154.733	7.251	-841674.348753
合計				-330.181260
合計面積				165.0906300
地積				165.09 m ²

地番	㊸ 307-36			
NO	Xn	Yn	Yn+1-Yn-1	Xn · (Yn+1-Yn-1)
K231	-116103.460	-9169.967	1.242	-144200.497320
S190	-116103.158	-9170.521	-14.489	1682218.656262
S191	-116095.545	-9184.456	-15.133	1756873.882485
S192	-116091.451	-9185.654	-6.979	810202.236529
S188	-116102.020	-9191.435	-1.688	195980.209760
S189	-116100.817	-9187.342	19.672	-2283935.272024
K232	-116109.325	-9171.763	17.375	-2017399.521875
合計				-260.306183
合計面積				130.1530915
地積				130.15 m ²

作成者

大津市京町二丁目3番14号201号室
土地家屋調査士 嶋谷健児

(令和3年1月22日作成)

申請人

西和不動産株式会社
代表取締役 福島正義

縮尺

1

地番

307-1 ~ 307-186

地積測量図

土地の所在

大津市大平二丁目字別所

14/34

地番	㉔ 307-37				
NO	Xn	Yn	Yn+1-Yn-1	Xn · (Yn+1-Yn-1)	
C53	-116109.797	-9171.907	8.418	-977412.271146	
K232	-116109.325	-9171.763	-15.435	1792147.431375	
S189	-116100.817	-9187.342	-19.672	2283935.272024	
S188	-116102.020	-9191.435	-8.455	981642.579100	
S187	-116109.993	-9195.797	8.198	-951869.722614	
K233	-116116.847	-9183.237	15.616	-1813280.682752	
C32	-116115.555	-9180.181	11.330	-1315589.238150	
合計				-426.632163	
合計面積				213.3160815	
地積				213.31 m ²	

地番	㉕ 307-38				
NO	Xn	Yn	Yn+1-Yn-1	Xn · (Yn+1-Yn-1)	
K233	-116116.847	-9183.237	-6.586	764745.554342	
S187	-116109.993	-9195.797	-21.427	2487888.820011	
S184	-116126.227	-9204.664	-5.802	673764.369054	
K35	-116127.905	-9201.599	8.620	-1001022.541100	
K34	-116123.302	-9196.044	7.619	-884743.437938	
K33	-116122.115	-9193.980	6.833	-793462.411795	
C33	-116119.373	-9189.211	10.743	-1247470.424139	
合計				-300.071565	
合計面積				150.0357825	
地積				150.03 m ²	

地番	㉖ 307-39				
NO	Xn	Yn	Yn+1-Yn-1	Xn · (Yn+1-Yn-1)	
K35	-116127.905	-9201.599	2.622	-304487.366910	
S184	-116126.227	-9204.664	-6.028	700008.896356	
S183	-116131.654	-9207.627	-2.622	304497.196788	
K234	-116131.818	-9207.286	6.028	-700042.598904	
合計				-23.872670	
合計面積				11.9363350	
地積				11.93 m ²	

地番	㉗ 307-40				
NO	Xn	Yn	Yn+1-Yn-1	Xn · (Yn+1-Yn-1)	
K234	-116131.818	-9207.286	6.441	-748005.039738	
S183	-116131.654	-9207.627	-10.408	1208698.254832	
S182	-116134.580	-9217.694	-6.532	758591.076560	
K235	-116136.537	-9214.159	3.626	-421111.083162	
C31	-116136.483	-9214.068	6.873	-798206.047659	
合計				-32.839167	
合計面積				16.4195835	
地積				16.41 m ²	

地番	㉘ 307-41				
NO	Xn	Yn	Yn+1-Yn-1	Xn · (Yn+1-Yn-1)	
K236	-116121.225	-9208.777	-8.536	991210.776600	
Y303	-116114.997	-9220.172	-16.195	1880482.376415	
K261	-116123.755	-9224.972	3.090	-358822.402950	
S186	-116128.067	-9217.082	13.336	-1548683.901512	
S185	-116126.460	-9211.636	8.305	-964430.250300	
合計				-243.401747	
合計面積				121.7008735	
地積				121.70 m ²	

地番	㉙ 307-42				
NO	Xn	Yn	Yn+1-Yn-1	Xn · (Yn+1-Yn-1)	
Y303	-116114.997	-9220.172	6.605	-766939.555185	
K236	-116121.225	-9208.777	16.198	-1880931.602550	
K237	-116112.433	-9203.974	-6.605	766922.619965	
Y299	-116106.215	-9215.382	-16.198	1880688.470570	
合計				-260.067200	
合計面積				130.0336000	
地積				130.03 m ²	

地番	㉚ 307-43				
NO	Xn	Yn	Yn+1-Yn-1	Xn · (Yn+1-Yn-1)	
Y299	-116106.215	-9215.382	6.610	-767462.081150	
K237	-116112.433	-9203.974	16.211	-1882298.651363	
K238	-116103.648	-9199.171	-6.610	767445.113280	
Y296	-116097.435	-9210.584	-16.211	1882055.518785	
合計				-260.100448	
合計面積				130.0502240	
地積				130.05 m ²	

地番	㉛ 307-44				
NO	Xn	Yn	Yn+1-Yn-1	Xn · (Yn+1-Yn-1)	
Y296	-116097.435	-9210.584	6.612	-767636.240220	
K238	-116103.648	-9199.171	16.200	-1880879.097600	
K239	-116094.893	-9194.384	-6.612	767619.432516	
Y291	-116088.657	-9205.783	-16.200	1880636.243400	
合計				-259.661904	
合計面積				129.8309520	
地積				129.83 m ²	

作成者

大津市京町二丁目3番14号201号室

土地家屋調査士

嶋谷健児

(令和3年1月22日作成)

申請人

西和不動産株式会社
代表取締役 福島正義

縮尺

1

地番

307-1 ~ 307-186

地積測量図

土地の所在

大津市大平二丁目字別所

15/34

地番	㊦ 307-45			
NO	Xn	Yn	Yn+1-Yn-1	Xn · (Yn+1-Yn-1)
Y291	-116088.657	-9205.783	6.595	-765604.692915
K239	-116094.893	-9194.384	16.205	-1881317.741065
K240	-116086.109	-9189.578	-6.595	765587.888855
Y288	-116079.864	-9200.979	-16.205	1881074.196120
合計				-260.349005
合計面積				130.1745025
地積				130.17 m ²

地番	㊩ 307-49			
NO	Xn	Yn	Yn+1-Yn-1	Xn · (Yn+1-Yn-1)
Y331	-116053.547	-9186.578	6.604	-766417.624388
K243	-116059.794	-9175.182	16.201	-1880284.722594
K244	-116051.010	-9170.377	-6.604	766400.870040
Y328	-116044.776	-9181.786	-16.201	1880041.415976
合計				-260.060966
合計面積				130.0304830
地積				130.03 m ²

地番	㊪ 307-46			
NO	Xn	Yn	Yn+1-Yn-1	Xn · (Yn+1-Yn-1)
Y288	-116079.864	-9200.979	6.604	-766591.421856
K240	-116086.109	-9189.578	16.199	-1880478.879691
K241	-116077.337	-9184.780	-6.604	766574.733548
Y317	-116071.103	-9196.182	-16.199	1880235.797497
合計				-259.770502
合計面積				129.8852510
地積				129.88 m ²

地番	㊫ 307-50			
NO	Xn	Yn	Yn+1-Yn-1	Xn · (Yn+1-Yn-1)
Y328	-116044.776	-9181.786	6.611	-767172.014136
K244	-116051.010	-9170.377	16.206	-1880722.668060
K245	-116042.240	-9165.580	-6.611	767155.248640
Y356	-116035.995	-9176.988	-16.206	1880479.334970
合計				-260.098586
合計面積				130.0492930
地積				130.04 m ²

地番	㊬ 307-47			
NO	Xn	Yn	Yn+1-Yn-1	Xn · (Yn+1-Yn-1)
Y317	-116071.103	-9196.182	6.599	-765953.208697
K241	-116077.337	-9184.780	16.198	-1880220.704726
K242	-116068.571	-9179.984	-6.599	765936.500029
Y314	-116062.320	-9191.379	-16.198	1879977.459360
合計				-259.954034
合計面積				129.9770170
地積				129.97 m ²

地番	㊭ 307-51			
NO	Xn	Yn	Yn+1-Yn-1	Xn · (Yn+1-Yn-1)
Y356	-116035.995	-9176.988	6.610	-766997.926950
K245	-116042.240	-9165.580	16.212	-1881276.794880
K246	-116033.459	-9160.776	-6.610	766981.163990
Y353	-116027.233	-9172.190	-16.212	1881033.501396
合計				-260.056444
合計面積				130.0282220
地積				130.02 m ²

地番	㊮ 307-48			
NO	Xn	Yn	Yn+1-Yn-1	Xn · (Yn+1-Yn-1)
Y314	-116062.320	-9191.379	6.594	-765314.938080
K242	-116068.571	-9179.984	16.197	-1879962.644487
K243	-116059.794	-9175.182	-6.594	765298.281636
Y331	-116053.547	-9186.578	-16.197	1879719.300759
合計				-260.000172
合計面積				130.0000860
地積				130.00 m ²

地番	㊯ 307-52			
NO	Xn	Yn	Yn+1-Yn-1	Xn · (Yn+1-Yn-1)
Y353	-116027.233	-9172.190	6.614	-767404.119062
K246	-116033.459	-9160.776	16.216	-1881598.571144
K247	-116024.682	-9155.974	-6.614	767387.246748
Y348	-116018.436	-9167.390	-16.216	1881354.958176
合計				-260.485282
合計面積				130.2426410
地積				130.24 m ²

作成者

大津市京町二丁目3番14号201号室
土地家屋調査士 嶋谷健児

(令和3年1月22日作成)

申請人

西和不動産株式会社
代表取締役 福島正義

縮尺

1

地番

307-1 ~ 307-186

地積測量図

土地の所在

大津市大平二丁目字別所

16/34

地番	㊸ 307-53				
NO	Xn	Yn	Yn+1-Yn-1	Xn · (Yn+1-Yn-1)	
Y348	-116018.436	-9167.390	6.616	-767577.972576	
K247	-116024.682	-9155.974	14.802	-1717397.342964	
S207	-116018.492	-9152.588	2.154	-249903.831768	
S208	-116014.448	-9153.820	-10.002	1160376.508896	
K248	-116009.648	-9162.590	-13.570	1574250.923360	
合計				-251.715052	
合計面積				125.8575260	
地積				125.85 m ²	

地番	㊹ 307-57				
NO	Xn	Yn	Yn+1-Yn-1	Xn · (Yn+1-Yn-1)	
Y328	-116044.776	-9181.786	16.200	-1879925.371200	
Y356	-116035.995	-9176.988	-6.623	768506.394885	
K251	-116029.777	-9188.409	-16.200	1879682.387400	
K252	-116038.518	-9193.188	6.623	-768523.104714	
合計				-259.693629	
合計面積				129.8468145	
地積				129.84 m ²	

地番	㊺ 307-54				
NO	Xn	Yn	Yn+1-Yn-1	Xn · (Yn+1-Yn-1)	
Y348	-116018.436	-9167.390	16.213	-1881006.902868	
K248	-116009.648	-9162.590	-3.954	458702.148192	
S211	-116004.856	-9171.344	-12.839	1489386.346184	
S212	-116006.034	-9175.429	-7.459	865289.007606	
K249	-116012.205	-9178.803	8.039	-932622.115995	
合計				-251.516881	
合計面積				125.7584405	
地積				125.75 m ²	

地番	㊻ 307-58				
NO	Xn	Yn	Yn+1-Yn-1	Xn · (Yn+1-Yn-1)	
Y331	-116053.547	-9186.578	16.209	-1881111.943323	
Y328	-116044.776	-9181.786	-6.610	767055.969360	
K252	-116038.518	-9193.188	-16.209	1880868.338262	
K253	-116047.310	-9197.995	6.610	-767072.719100	
合計				-260.354801	
合計面積				130.1774005	
地積				130.17 m ²	

地番	㊼ 307-55				
NO	Xn	Yn	Yn+1-Yn-1	Xn · (Yn+1-Yn-1)	
Y353	-116027.233	-9172.190	16.203	-1879989.256299	
Y348	-116018.436	-9167.390	-6.613	767229.917268	
K249	-116012.205	-9178.803	-16.203	1879745.757615	
K250	-116020.967	-9183.593	6.613	-767246.654771	
合計				-260.236187	
合計面積				130.1180935	
地積				130.11 m ²	

地番	㊽ 307-59				
NO	Xn	Yn	Yn+1-Yn-1	Xn · (Yn+1-Yn-1)	
Y314	-116062.320	-9191.379	16.209	-1881254.144880	
Y331	-116053.547	-9186.578	-6.616	767810.266952	
K253	-116047.310	-9197.995	-16.209	1881010.847790	
K254	-116056.075	-9202.787	6.616	-767826.992200	
合計				-260.022338	
合計面積				130.0111690	
地積				130.01 m ²	

地番	㊾ 307-56				
NO	Xn	Yn	Yn+1-Yn-1	Xn · (Yn+1-Yn-1)	
Y356	-116035.995	-9176.988	16.219	-1881987.802905	
Y353	-116027.233	-9172.190	-6.605	766359.873965	
K250	-116020.967	-9183.593	-16.219	1881744.063773	
K251	-116029.777	-9188.409	6.605	-766376.677085	
合計				-260.542252	
合計面積				130.2711260	
地積				130.27 m ²	

地番	㊿ 307-60				
NO	Xn	Yn	Yn+1-Yn-1	Xn · (Yn+1-Yn-1)	
Y317	-116071.103	-9196.182	16.212	-1881744.721836	
Y314	-116062.320	-9191.379	-6.605	766591.623600	
K254	-116056.075	-9202.787	-16.212	1881501.087900	
K255	-116064.864	-9207.591	6.605	-766608.426720	
合計				-260.437056	
合計面積				130.2185280	
地積				130.21 m ²	

作成者

大津市京町二丁目3番14号201号室
土地家屋調査士 嶋谷健児

(令和3年1月22日作成)

申請人

西和不動産株式会社
代表取締役 福島正義

縮尺

1

地番

307-1 ~ 307-186

地積測量図

土地の所在

大津市大平二丁目字別所

17/34

地番	㊦ 307-61			
NO	Xn	Yn	Yn+1-Yn-1	Xn · (Yn+1-Yn-1)
Y288	-116079.864	-9200.979	16.212	-1881886.755168
Y317	-116071.103	-9196.182	-6.612	767462.133036
K255	-116064.864	-9207.591	-16.212	1881643.575168
K256	-116073.648	-9212.394	6.612	-767478.960576
合計				-260.007540
合計面積				130.0037700
地積				130.00 m ²

地番	㊥ 307-65			
NO	Xn	Yn	Yn+1-Yn-1	Xn · (Yn+1-Yn-1)
Y303	-116114.997	-9220.172	16.201	-1881179.066397
Y299	-116106.215	-9215.382	-6.607	767113.762505
K259	-116099.966	-9226.779	-16.201	1880935.549166
K260	-116108.745	-9231.583	6.607	-767130.478215
合計				-260.232941
合計面積				130.1164705
地積				130.11 m ²

地番	㊧ 307-62			
NO	Xn	Yn	Yn+1-Yn-1	Xn · (Yn+1-Yn-1)
Y291	-116088.657	-9205.783	16.209	-1881681.041313
Y288	-116079.864	-9200.979	-6.611	767403.980904
K256	-116073.648	-9212.394	-16.209	1881437.760432
K257	-116082.424	-9217.188	6.611	-767420.905064
合計				-260.205041
合計面積				130.1025205
地積				130.10 m ²

地番	㊦ 307-66			
NO	Xn	Yn	Yn+1-Yn-1	Xn · (Yn+1-Yn-1)
K261	-116123.755	-9224.972	13.568	-1575567.107840
Y303	-116114.997	-9220.172	-6.611	767636.245167
K260	-116108.745	-9231.583	-14.766	1714461.728670
S249	-116114.877	-9234.938	-2.157	250459.789689
S250	-116118.963	-9233.740	9.966	-1157241.585258
合計				-250.929572
合計面積				125.4647860
地積				125.46 m ²

地番	㊧ 307-63			
NO	Xn	Yn	Yn+1-Yn-1	Xn · (Yn+1-Yn-1)
Y296	-116097.435	-9210.584	16.196	-1880314.057260
Y291	-116088.657	-9205.783	-6.604	766649.490828
K257	-116082.424	-9217.188	-16.196	1880070.939104
K258	-116091.193	-9221.979	6.604	-766666.238572
合計				-259.865900
合計面積				129.9329500
地積				129.93 m ²

地番	㊧ 307-67			
NO	Xn	Yn	Yn+1-Yn-1	Xn · (Yn+1-Yn-1)
K262	-116105.858	-9236.858	-8.055	935232.686190
K286	-116099.627	-9248.274	-16.214	1882439.352178
K287	-116108.402	-9253.072	3.966	-460485.922332
S247	-116113.186	-9244.308	12.853	-1492402.779658
S248	-116112.005	-9240.219	7.450	-865034.437250
合計				-251.100872
合計面積				125.5504360
地積				125.55 m ²

地番	㊨ 307-64			
NO	Xn	Yn	Yn+1-Yn-1	Xn · (Yn+1-Yn-1)
Y299	-116106.215	-9215.382	16.195	-1880340.151925
Y296	-116097.435	-9210.584	-6.597	765894.778695
K258	-116091.193	-9221.979	-16.195	1880096.870635
K259	-116099.966	-9226.779	6.597	-765911.475702
合計				-259.978297
合計面積				129.9891485
地積				129.98 m ²

地番	㊥ 307-68			
NO	Xn	Yn	Yn+1-Yn-1	Xn · (Yn+1-Yn-1)
K286	-116099.627	-9248.274	6.617	-768231.231859
K262	-116105.858	-9236.858	16.208	-1881843.746464
K263	-116097.093	-9232.066	-6.617	768214.464381
K285	-116090.851	-9243.475	-16.208	1881600.513008
合計				-260.000934
合計面積				130.0004670
地積				130.00 m ²

作成者

大津市京町二丁目3番14号201号室
土地家屋調査士 嶋谷健児

(令和3年1月22日作成)

申請人

西和不動産株式会社
代表取締役 福島正義

縮尺

1

地番

307-1 ~ 307-186

地積測量図

土地の所在

大津市大平二丁目字別所

18/34

地番	㊸ 307-69			
NO	Xn	Yn	Yn+1-Yn-1	Xn · (Yn+1-Yn-1)
K285	-116090.851	-9243.475	6.609	-767244.434259
K263	-116097.093	-9232.066	16.211	-1882049.974623
K264	-116088.309	-9227.264	-6.609	767227.634181
K284	-116082.071	-9238.675	-16.211	1881806.452981
合計				-260.321720
合計面積				130.1608600
地積				130.16 m ²

地番	㊹ 307-73			
NO	Xn	Yn	Yn+1-Yn-1	Xn · (Yn+1-Yn-1)
K281	-116055.743	-9224.280	6.611	-767244.516973
K267	-116061.978	-9212.868	16.209	-1881248.601402
K268	-116053.204	-9208.071	-6.611	767227.731644
K280	-116046.962	-9219.479	-16.209	1881005.207058
合計				-260.179673
合計面積				130.0898365
地積				130.08 m ²

地番	㊺ 307-70			
NO	Xn	Yn	Yn+1-Yn-1	Xn · (Yn+1-Yn-1)
K284	-116082.071	-9238.675	6.612	-767534.653452
K264	-116088.309	-9227.264	16.210	-1881791.488890
K265	-116079.532	-9222.465	-6.612	767517.865584
K283	-116073.294	-9233.876	-16.210	1881548.095740
合計				-260.181018
合計面積				130.0905090
地積				130.09 m ²

地番	㊻ 307-74			
NO	Xn	Yn	Yn+1-Yn-1	Xn · (Yn+1-Yn-1)
K280	-116046.962	-9219.479	6.610	-767070.418820
K268	-116053.204	-9208.071	16.206	-1880758.224024
K269	-116044.428	-9203.273	-6.610	767053.669080
K279	-116038.186	-9214.681	-16.206	1880514.842316
合計				-260.131448
合計面積				130.0657240
地積				130.06 m ²

地番	㊼ 307-71			
NO	Xn	Yn	Yn+1-Yn-1	Xn · (Yn+1-Yn-1)
K283	-116073.294	-9233.876	6.611	-767360.546634
K265	-116079.532	-9222.465	16.210	-1881649.213720
K266	-116070.754	-9217.666	-6.611	767343.754694
K282	-116064.514	-9229.076	-16.210	1881405.771940
合計				-260.233720
合計面積				130.1168600
地積				130.11 m ²

地番	㊽ 307-75			
NO	Xn	Yn	Yn+1-Yn-1	Xn · (Yn+1-Yn-1)
K279	-116038.186	-9214.681	6.605	-766432.218530
K269	-116044.428	-9203.273	16.212	-1881312.266736
K270	-116035.640	-9198.469	-6.605	766415.402200
K278	-116029.402	-9209.878	-16.212	1881068.665224
合計				-260.417842
合計面積				130.2089210
地積				130.20 m ²

地番	㊾ 307-72			
NO	Xn	Yn	Yn+1-Yn-1	Xn · (Yn+1-Yn-1)
K282	-116064.514	-9229.076	6.614	-767650.695596
K266	-116070.754	-9217.666	16.208	-1881274.780832
K267	-116061.978	-9212.868	-6.614	767633.922492
K281	-116055.743	-9224.280	-16.208	1881031.482544
合計				-260.071392
合計面積				130.0356960
地積				130.03 m ²

地番	㊿ 307-76			
NO	Xn	Yn	Yn+1-Yn-1	Xn · (Yn+1-Yn-1)
K278	-116029.402	-9209.878	6.612	-767186.406024
K270	-116035.640	-9198.469	16.207	-1880589.617480
K271	-116026.865	-9193.671	-6.612	767169.631380
K277	-116020.629	-9205.081	-16.207	1880346.334203
合計				-260.057921
合計面積				130.0289605
地積				130.02 m ²

作成者

大津市京町二丁目3番14号201号室
土地家屋調査士 嶋谷健児

(令和 3 年 1 月 22 日作成)

申請人

西和不動産株式会社
代表取締役 福島正義

縮尺

1/

地番

307-1 ~ 307-186

地積測量図

土地の所在

大津市大平二丁目字別所

19/34

地番	㉗ 307-77			
NO	Xn	Yn	Yn+1-Yn-1	Xn · (Yn+1-Yn-1)
K277	-116020.629	-9205.081	6.609	-766780.337061
K271	-116026.865	-9193.671	16.205	-1880215.347325
K272	-116018.095	-9188.876	-6.609	766763.589855
K276	-116011.849	-9200.280	-16.205	1879972.013045
合計				-260.081486
合計面積				130.0407430
地積				130.04 m ²

地番	㉘ 307-81			
NO	Xn	Yn	Yn+1-Yn-1	Xn · (Yn+1-Yn-1)
K276	-116011.849	-9200.280	16.192	-1878463.859008
K275	-116003.081	-9195.487	-6.613	767128.374653
K299	-115996.852	-9206.893	-16.192	1878221.027584
K298	-116005.605	-9211.679	6.613	-767145.065865
合計				-259.522636
合計面積				129.7613180
地積				129.76 m ²

地番	㉙ 307-78			
NO	Xn	Yn	Yn+1-Yn-1	Xn · (Yn+1-Yn-1)
K276	-116011.849	-9200.280	6.611	-766954.333739
K272	-116018.095	-9188.876	16.204	-1879957.211380
K273	-116009.314	-9184.076	-6.611	766937.574854
K275	-116003.081	-9195.487	-16.204	1879713.924524
合計				-260.045741
合計面積				130.0228705
地積				130.02 m ²

地番	㉚ 307-82			
NO	Xn	Yn	Yn+1-Yn-1	Xn · (Yn+1-Yn-1)
K277	-116020.629	-9205.081	16.207	-1880346.334203
K276	-116011.849	-9200.280	-6.598	765446.179702
K298	-116005.605	-9211.679	-16.207	1880102.840235
K297	-116014.397	-9216.487	6.598	-765462.991406
合計				-260.305672
合計面積				130.1528360
地積				130.15 m ²

地番	㉛ 307-79			
NO	Xn	Yn	Yn+1-Yn-1	Xn · (Yn+1-Yn-1)
K275	-116003.081	-9195.487	6.609	-766664.362329
K273	-116009.314	-9184.076	14.762	-1712529.493268
S213	-116003.186	-9180.725	2.157	-250218.872202
S214	-115999.094	-9181.919	-9.960	1155350.976240
K274	-115994.299	-9190.685	-13.568	1573810.648832
合計				-251.102727
合計面積				125.5513635
地積				125.55 m ²

地番	㉜ 307-83			
NO	Xn	Yn	Yn+1-Yn-1	Xn · (Yn+1-Yn-1)
K278	-116029.402	-9209.878	16.201	-1879792.341802
K277	-116020.629	-9205.081	-6.609	766780.337061
K297	-116014.397	-9216.487	-16.201	1879549.245797
K296	-116023.167	-9221.282	6.609	-766797.110703
合計				-259.869647
合計面積				129.9348235
地積				129.93 m ²

地番	㉝ 307-80			
NO	Xn	Yn	Yn+1-Yn-1	Xn · (Yn+1-Yn-1)
K275	-116003.081	-9195.487	16.208	-1880177.936848
K274	-115994.299	-9190.685	-3.960	459337.424040
S215	-115989.507	-9199.447	-12.845	1489885.217415
S216	-115990.702	-9203.530	-7.446	863666.767092
K299	-115996.852	-9206.893	8.043	-932962.680636
合計				-251.208937
合計面積				125.6044685
地積				125.60 m ²

地番	㉞ 307-84			
NO	Xn	Yn	Yn+1-Yn-1	Xn · (Yn+1-Yn-1)
K279	-116038.186	-9214.681	16.205	-1880398.804130
K278	-116029.402	-9209.878	-6.601	765910.082602
K296	-116023.167	-9221.282	-16.205	1880155.421235
K295	-116031.946	-9226.083	6.601	-765926.875546
合計				-260.175839
合計面積				130.0879195
地積				130.08 m ²

作成者

大津市京町二丁目3番14号201号室
土地家屋調査士 嶋谷健児

(令和 3 年 1 月 22 日作成)

申請人

西和不動産株式会社
代表取締役 福島正義

縮尺

1

地番

307-1 ~ 307-186

地積測量図

土地の所在

大津市大平二丁目字別所

20/34

地番	㊸ 307-85			
NO	Xn	Yn	Yn+1-Yn-1	Xn · (Yn+1-Yn-1)
K280	-116046.962	-9219.479	16.202	-1880192.878324
K279	-116038.186	-9214.681	-6.604	766316.180344
K295	-116031.946	-9226.083	-16.202	1879949.589092
K294	-116040.724	-9230.883	6.604	-766332.941296
合計				-260.050184
合計面積				130.0250920
地積				130.02 m ²

地番	㊸ 307-89			
NO	Xn	Yn	Yn+1-Yn-1	Xn · (Yn+1-Yn-1)
K284	-116082.071	-9238.675	16.206	-1881226.042626
K283	-116073.294	-9233.876	-6.608	767012.326752
K291	-116067.059	-9245.283	-16.206	1880982.758154
K290	-116075.835	-9250.082	6.608	-767029.117680
合計				-260.075400
合計面積				130.0377000
地積				130.03 m ²

地番	㊸ 307-86			
NO	Xn	Yn	Yn+1-Yn-1	Xn · (Yn+1-Yn-1)
K281	-116055.743	-9224.280	16.208	-1881031.482544
K280	-116046.962	-9219.479	-6.603	766258.090086
K294	-116040.724	-9230.883	-16.208	1880788.054592
K293	-116049.511	-9235.687	6.603	-766274.921133
合計				-260.258999
合計面積				130.1294995
地積				130.12 m ²

地番	㊸ 307-90			
NO	Xn	Yn	Yn+1-Yn-1	Xn · (Yn+1-Yn-1)
K285	-116090.851	-9243.475	16.205	-1881252.240455
K284	-116082.071	-9238.675	-6.607	766954.243097
K290	-116075.835	-9250.082	-16.205	1881008.906175
K289	-116084.610	-9254.880	6.607	-766971.018270
合計				-260.109453
合計面積				130.0547265
地積				130.05 m ²

地番	㊸ 307-87			
NO	Xn	Yn	Yn+1-Yn-1	Xn · (Yn+1-Yn-1)
K282	-116064.514	-9229.076	16.201	-1880361.191314
K281	-116055.743	-9224.280	-6.611	767244.516973
K293	-116049.511	-9235.687	-16.201	1880118.127711
K292	-116058.277	-9240.481	6.611	-767261.269247
合計				-259.815877
合計面積				129.9079385
地積				129.90 m ²

地番	㊸ 307-91			
NO	Xn	Yn	Yn+1-Yn-1	Xn · (Yn+1-Yn-1)
K286	-116099.627	-9248.274	16.211	-1882091.053297
K285	-116090.851	-9243.475	-6.606	766896.161706
K289	-116084.610	-9254.880	-16.211	1881847.612710
K288	-116093.398	-9259.686	6.606	-766912.987188
合計				-260.266069
合計面積				130.1330345
地積				130.13 m ²

地番	㊸ 307-88			
NO	Xn	Yn	Yn+1-Yn-1	Xn · (Yn+1-Yn-1)
K283	-116073.294	-9233.876	16.207	-1881199.875858
K282	-116064.514	-9229.076	-6.605	766606.114970
K292	-116058.277	-9240.481	-16.207	1880956.495339
K291	-116067.059	-9245.283	6.605	-766622.924695
合計				-260.190244
合計面積				130.0951220
地積				130.09 m ²

地番	㊸ 307-92			
NO	Xn	Yn	Yn+1-Yn-1	Xn · (Yn+1-Yn-1)
K287	-116108.402	-9253.072	13.551	-1573384.955502
K286	-116099.627	-9248.274	-6.614	767882.932978
K288	-116093.398	-9259.686	-14.753	1712725.900694
S169	-116099.509	-9263.027	-2.139	248336.849751
S168	-116103.635	-9261.825	9.955	-1155811.686425
合計				-250.958504
合計面積				125.4792520
地積				125.47 m ²

作成者

大津市京町二丁目3番14号201号室
土地家屋調査士 嶋谷健児

(令和3年1月22日作成)

申請人

西和不動産株式会社
代表取締役 福島正義

縮尺

1/

地番

307-1 ~ 307-186

地積測量図

土地の所在

大津市大平二丁目字別所

21/34

地番	㊸ 307-93			
NO	Xn	Yn	Yn+1-Yn-1	Xn · (Yn+1-Yn-1)
K36	-116142.010	-9223.372	15.206	-1766055.404060
K235	-116136.537	-9214.159	5.678	-659423.257086
S182	-116134.580	-9217.694	-50.563	5872112.768540
S167	-116108.897	-9264.722	-51.117	5935138.487949
S166	-116110.071	-9268.811	-9.174	1065193.791354
S165	-116119.427	-9273.896	2.180	-253140.350860
S176	-116123.398	-9266.631	28.417	-3299878.600966
S179	-116140.663	-9245.479	25.869	-3004442.811147
S180	-116143.253	-9240.762	9.280	-1077809.387840
S181	-116144.920	-9236.199	11.397	-1323703.653240
K37	-116145.109	-9229.365	12.827	-1489793.313143
合計				-1801.730499
合計面積				900.8652495
地積				900.86 m ²

地番	㊸ 307-94			
NO	Xn	Yn	Yn+1-Yn-1	Xn · (Yn+1-Yn-1)
K89	-116127.532	-9270.462	1.429	-165946.243228
K90	-116127.909	-9269.329	3.014	-350009.517726
K91	-116128.589	-9267.448	3.843	-446282.167527
K92	-116129.636	-9265.486	8.330	-967359.867880
C20	-116134.740	-9259.118	9.914	-1151359.812360
C22	-116137.188	-9255.572	11.970	-1390162.140360
K43	-116143.217	-9247.148	11.446	-1329375.261782
K42	-116144.798	-9244.126	6.654	-772827.485892
K41	-116145.871	-9240.494	7.375	-856575.798625
K40	-116146.433	-9236.751	7.073	-821503.720609
K39	-116146.431	-9233.421	5.045	-585958.744395
K38	-116146.128	-9231.706	4.056	-471088.695168
K37	-116145.109	-9229.365	-4.493	521839.974737
S181	-116144.920	-9236.199	-11.397	1323703.653240
S180	-116143.253	-9240.762	-9.280	1077809.387840
S179	-116140.663	-9245.479	-25.869	3004442.811147
S176	-116123.398	-9266.631	-28.417	3299878.600966
S165	-116119.427	-9273.896	-15.614	1813088.733178
S175	-116114.867	-9282.245	-14.619	1697483.240673
S177	-116126.288	-9288.515	-15.406	1789041.592928
Y274	-116129.024	-9297.651	-21.687	2518490.143488
K300	-116132.755	-9310.202	-11.837	1374663.420935
Y103	-116135.639	-9309.488	13.935	-1618350.129465
Y102	-116132.274	-9296.267	16.400	-1904569.293600
Y101	-116131.458	-9293.088	9.782	-1135997.922156
Y100	-116129.028	-9286.485	8.553	-993251.576484
Y99	-116128.153	-9284.535	3.692	-428745.140876
Y98	-116127.651	-9282.793	3.328	-386472.822528
Y97	-116127.317	-9281.207	4.130	-479605.819210
Y96	-116127.005	-9278.663	5.103	-592596.106515
Y95	-116126.986	-9276.104	5.466	-634750.105476
Y104	-116127.270	-9273.197	5.346	-620816.385420
Y105	-116128.055	-9270.758	2.735	-317610.230425
合計				-773.428575
合計面積				386.7142875
地積				386.71 m ²

地番	㊸ 307-95			
NO	Xn	Yn	Yn+1-Yn-1	Xn · (Yn+1-Yn-1)
Y274	-116129.024	-9297.651	9.467	-1099393.470208
Y271	-116118.690	-9300.735	-2.001	232353.498690
K301	-116117.540	-9299.652	0.377	-43776.312580
K302	-116116.829	-9300.358	-1.412	163956.962548
K54	-116117.579	-9301.064	-10.972	1274042.076788
C46	-116128.197	-9311.330	-9.138	1061179.464186
K300	-116132.755	-9310.202	13.679	-1588579.955645
合計				-217.736221
合計面積				108.8681105
地積				108.86 m ²

作成者

大津市京町二丁目3番14号201号室
土地家屋調査士 嶋谷健児

(令和 3 年 1 月 22 日作成)

申請人

西和不動産株式会社
代表取締役 福島正義

縮尺

1

地番

307-1 ~ 307-186

地積測量図

土地の所在

大津市大平二丁目字別所

22/34

地番	㊸ 307-96				
NO	Xn	Yn	Yn+1-Yn-1	Xn · (Yn+1-Yn-1)	
Y269	-116108.225	-9294.375	1.883	-218631.787675	
S155	-116093.014	-9292.903	18.859	-2189398.151026	
S163	-116102.518	-9275.516	17.872	-2074984.201696	
S164	-116101.637	-9275.031	-10.046	1166357.045302	
Y252	-116095.865	-9285.562	-18.013	2091234.816245	
S156	-116091.796	-9293.044	-8.250	957757.317000	
K24	-116091.376	-9293.812	-1.738	201766.811488	
C50	-116101.929	-9294.782	-1.994	231507.246426	
C49	-116111.993	-9295.806	-5.576	647440.472968	
K302	-116116.829	-9300.358	-3.846	446585.324334	
K301	-116117.540	-9299.652	5.572	-647006.932880	
S178	-116112.373	-9294.786	5.277	-612724.992321	
合計				-97.031835	
合計面積				48.5159175	
地積				48.51 m ²	

地番	㊸ 307-97				
NO	Xn	Yn	Yn+1-Yn-1	Xn · (Yn+1-Yn-1)	
S175	-116114.867	-9282.245	1.877	-217947.605359	
S174	-116112.460	-9286.638	-12.130	1408444.139800	
Y269	-116108.225	-9294.375	-8.148	946049.817300	
S178	-116112.373	-9294.786	-5.277	612724.992321	
K301	-116117.540	-9299.652	-5.949	690783.245460	
Y271	-116118.690	-9300.735	2.001	-232353.498690	
Y274	-116129.024	-9297.651	12.220	-1419096.673280	
S177	-116126.288	-9288.515	15.406	-1789041.592928	
合計				-437.175376	
合計面積				218.5876880	
地積				218.58 m ²	

地番	㊸ 307-98				
NO	Xn	Yn	Yn+1-Yn-1	Xn · (Yn+1-Yn-1)	
Y269	-116108.225	-9294.375	6.265	-727418.029625	
S174	-116112.460	-9286.638	10.628	-1234043.224880	
S173	-116107.171	-9283.747	4.646	-539433.916466	
S172	-116108.130	-9281.992	5.829	-676794.289770	
S171	-116106.921	-9277.918	6.476	-751908.420396	
S163	-116102.518	-9275.516	-14.985	1739796.232230	
S155	-116093.014	-9292.903	-18.859	2189398.151026	
合計				-403.497881	
合計面積				201.7489405	
地積				201.74 m ²	

地番	㊸ 307-99				
NO	Xn	Yn	Yn+1-Yn-1	Xn · (Yn+1-Yn-1)	
S154	-116078.047	-9289.747	5.465	-634366.526855	
Y246	-116072.379	-9286.623	1.891	-219492.868689	
K307	-116071.713	-9287.856	-3.245	376652.708685	
K22	-116075.783	-9289.868	-4.953	574923.353199	
K23	-116082.616	-9292.809	-3.944	457829.837504	
K24	-116091.376	-9293.812	-0.235	27281.473360	
S156	-116091.796	-9293.044	1.724	-200142.256304	
S157	-116083.573	-9292.088	3.297	-382727.540181	
合計				-41.819281	
合計面積				20.9096405	
地積				20.90 m ²	

地番	㊸ 307-100				
NO	Xn	Yn	Yn+1-Yn-1	Xn · (Yn+1-Yn-1)	
Y245	-116083.485	-9278.807	2.681	-311219.823285	
S149	-116081.244	-9282.881	-1.491	173077.134804	
K305	-116076.530	-9280.298	2.871	-333255.717630	
K304	-116075.999	-9280.010	-6.325	734180.693675	
Y246	-116072.379	-9286.623	-9.737	1130196.754323	
S154	-116078.047	-9289.747	-5.465	634366.526855	
S157	-116083.573	-9292.088	-3.297	382727.540181	
S156	-116091.796	-9293.044	6.526	-757615.060696	
Y252	-116095.865	-9285.562	14.237	-1652856.830005	
合計				-398.781778	
合計面積				199.3908890	
地積				199.39 m ²	

地番	㊸ 307-101				
NO	Xn	Yn	Yn+1-Yn-1	Xn · (Yn+1-Yn-1)	
Y245	-116083.485	-9278.807	-9.423	1093854.679155	
Y252	-116095.865	-9285.562	3.776	-438377.986240	
S164	-116101.637	-9275.031	18.745	-2176325.185565	
S161	-116086.610	-9266.817	7.021	-815044.088810	
S160	-116082.555	-9268.010	-6.433	746759.076315	
S144	-116079.690	-9273.250	-8.129	943611.800010	
S162	-116084.942	-9276.139	-5.557	645084.022694	
合計				-437.682441	
合計面積				218.8412205	
地積				218.84 m ²	

作成者

大津市京町二丁目3番14号201号室
土地家屋調査士 嶋谷健児

(令和3年1月22日作成)

申請人

西和不動産株式会社
代表取締役 福島正義

縮尺

1

地番

307-1 ~ 307-186

地積測量図

土地の所在

大津市大平二丁目字別所

23/34

地番	㊦ 307-102				
NO	Xn	Yn	Yn+1-Yn-1	Xn · (Yn+1-Yn-1)	
S144	-116079.690	-9273.250	-2.817	326996.486730	
K303	-116076.574	-9278.956	-5.992	695530.831408	
K306	-116077.102	-9279.242	-1.342	155775.470884	
K305	-116076.530	-9280.298	-3.639	422402.492670	
S149	-116081.244	-9282.881	1.491	-173077.134804	
Y245	-116083.485	-9278.807	6.742	-782634.855870	
S162	-116084.942	-9276.139	5.557	-645084.022694	
合計			-90.731676		
合計面積			45.3658380		
地積			45.36 m ²		

地番	㊦ 307-106				
NO	Xn	Yn	Yn+1-Yn-1	Xn · (Yn+1-Yn-1)	
Y239	-116057.723	-9273.820	-2.532	293858.154636	
Y238	-116052.907	-9282.595	-12.072	1400990.693304	
K320	-116058.931	-9285.892	1.552	-180123.460912	
K104	-116057.930	-9281.043	0.704	-81704.782720	
K311	-116066.316	-9285.188	0.980	-113744.989680	
K312	-116069.119	-9280.063	11.368	-1319473.744792	
合計			-198.130164		
合計面積			99.0650820		
地積			99.06 m ²		

地番	㊦ 307-103				
NO	Xn	Yn	Yn+1-Yn-1	Xn · (Yn+1-Yn-1)	
K303	-116076.574	-9278.956	-0.768	89146.808832	
K304	-116075.999	-9280.010	-1.342	155773.990658	
K305	-116076.530	-9280.298	0.768	-89146.775040	
K306	-116077.102	-9279.242	1.342	-155775.470884	
合計			-1.446434		
合計面積			0.7232170		
地積			0.72 m ²		

地番	㊦ 307-107				
NO	Xn	Yn	Yn+1-Yn-1	Xn · (Yn+1-Yn-1)	
K320	-116058.931	-9285.892	12.593	-1461530.118083	
Y238	-116052.907	-9282.595	-5.467	634461.242569	
Y221	-116048.114	-9291.359	-15.027	1743855.009078	
K308	-116059.518	-9297.622	-3.829	444391.894422	
K309	-116060.849	-9295.188	11.730	-1361393.758770	
合計			-215.730784		
合計面積			107.8653920		
地積			107.86 m ²		

地番	㊦ 307-104				
NO	Xn	Yn	Yn+1-Yn-1	Xn · (Yn+1-Yn-1)	
K314	-116067.311	-9256.264	-3.991	463224.638201	
Y244	-116062.513	-9265.043	-15.021	1743375.007773	
K313	-116073.918	-9271.285	-0.119	13812.796242	
S159	-116077.267	-9265.162	10.233	-1187818.673211	
S158	-116076.063	-9261.052	8.898	-1032844.808574	
合計			-251.039569		
合計面積			125.5197845		
地積			125.51 m ²		

地番	㊦ 307-108				
NO	Xn	Yn	Yn+1-Yn-1	Xn · (Yn+1-Yn-1)	
Y221	-116048.114	-9291.359	-2.554	296386.883156	
K319	-116043.292	-9300.176	-13.601	1578304.814492	
S142	-116052.037	-9304.960	-3.578	415234.188386	
S143	-116056.165	-9303.754	7.338	-851620.138770	
K308	-116059.518	-9297.622	12.395	-1438557.725610	
合計			-251.978346		
合計面積			125.9891730		
地積			125.98 m ²		

地番	㊦ 307-105				
NO	Xn	Yn	Yn+1-Yn-1	Xn · (Yn+1-Yn-1)	
K313	-116073.918	-9271.285	15.020	-1743430.248360	
Y244	-116062.513	-9265.043	-2.535	294218.470455	
Y239	-116057.723	-9273.820	-15.020	1743186.999460	
K312	-116069.119	-9280.063	2.535	-294235.216665	
合計			-259.995110		
合計面積			129.9975550		
地積			129.99 m ²		

地番	㊦ 307-109				
NO	Xn	Yn	Yn+1-Yn-1	Xn · (Yn+1-Yn-1)	
K319	-116043.292	-9300.176	4.034	-468118.639928	
Y221	-116048.114	-9291.359	15.050	-1746524.115700	
K318	-116036.693	-9285.126	0.072	-8354.641896	
S136	-116033.321	-9291.287	-10.267	1191314.106707	
S137	-116034.548	-9295.393	-8.889	1031431.097172	
合計			-252.193645		
合計面積			126.0968225		
地積			126.09 m ²		

作成者

大津市京町二丁目3番14号201号室
土地家屋調査士 嶋谷健児

(令和3年1月22日作成)

申請人

西和不動産株式会社
代表取締役 福島正義

縮尺

1

地番

307-1 ~ 307-186

地積測量図

土地の所在

大津市大平二丁目字別所

24/34

地番	㊦ 307-110			
NO	Xn	Yn	Yn+1-Yn-1	Xn · (Yn+1-Yn-1)
K318	-116036.693	-9285.126	-15.005	1741130.578465
Y221	-116048.114	-9291.359	2.531	-293717.776534
Y238	-116052.907	-9282.595	15.005	-1741373.869535
K317	-116041.494	-9276.354	-2.531	293701.021314
合計				-260.046290
合計面積				130.0231450
地積				130.02 m ²

地番	㊦ 307-114			
NO	Xn	Yn	Yn+1-Yn-1	Xn · (Yn+1-Yn-1)
K326	-116039.230	-9240.906	-3.992	463228.606160
Y265	-116034.415	-9249.684	-15.004	1740980.362660
K325	-116045.838	-9255.910	-0.099	11488.537962
S244	-116049.192	-9249.783	10.218	-1185790.643856
S243	-116047.977	-9245.692	8.877	-1030157.891829
合計				-251.028903
合計面積				125.5144515
地積				125.51 m ²

地番	㊦ 307-111			
NO	Xn	Yn	Yn+1-Yn-1	Xn · (Yn+1-Yn-1)
K317	-116041.494	-9276.354	-15.028	1743871.571832
Y238	-116052.907	-9282.595	2.534	-294078.066338
Y239	-116057.723	-9273.820	15.028	-1744115.461244
K316	-116046.304	-9267.567	-2.534	294061.334336
合計				-260.621414
合計面積				130.3107070
地積				130.31 m ²

地番	㊦ 307-115			
NO	Xn	Yn	Yn+1-Yn-1	Xn · (Yn+1-Yn-1)
K325	-116045.838	-9255.910	15.015	-1742428.257570
Y265	-116034.415	-9249.684	-2.531	293683.104365
Y266	-116029.610	-9258.441	-15.015	1742184.594150
K324	-116041.025	-9264.699	2.531	-293699.834275
合計				-260.393330
合計面積				130.1966650
地積				130.19 m ²

地番	㊦ 307-112			
NO	Xn	Yn	Yn+1-Yn-1	Xn · (Yn+1-Yn-1)
K316	-116046.304	-9267.567	-15.017	1742667.347168
Y239	-116057.723	-9273.820	2.524	-292929.692852
Y244	-116062.513	-9265.043	15.017	-1742910.757721
K315	-116051.101	-9258.803	-2.524	292912.978924
合計				-260.124481
合計面積				130.0622405
地積				130.06 m ²

地番	㊦ 307-116			
NO	Xn	Yn	Yn+1-Yn-1	Xn · (Yn+1-Yn-1)
K324	-116041.025	-9264.699	15.018	-1742704.113450
Y266	-116029.610	-9258.441	-2.548	295643.446280
Y211	-116024.805	-9267.247	-15.018	1742460.521490
K323	-116036.229	-9273.459	2.548	-295660.311492
合計				-260.457172
合計面積				130.2285860
地積				130.22 m ²

地番	㊦ 307-113			
NO	Xn	Yn	Yn+1-Yn-1	Xn · (Yn+1-Yn-1)
K315	-116051.101	-9258.803	-12.377	1436364.477077
Y244	-116062.513	-9265.043	2.539	-294682.720507
K314	-116067.311	-9256.264	13.580	-1576194.083380
S246	-116058.537	-9251.463	3.598	-417578.616126
S245	-116054.460	-9252.666	-7.340	851839.736400
合計				-251.206536
合計面積				125.6032680
地積				125.60 m ²

地番	㊦ 307-117			
NO	Xn	Yn	Yn+1-Yn-1	Xn · (Yn+1-Yn-1)
K323	-116036.229	-9273.459	14.994	-1739847.217626
Y211	-116024.805	-9267.247	-2.546	295399.153530
Y217	-116019.999	-9276.005	-14.994	1739603.865006
K322	-116031.425	-9282.241	2.546	-295416.008050
合計				-260.207140
合計面積				130.1035700
地積				130.10 m ²

作成者

大津市京町二丁目3番14号201号室
土地家屋調査士 嶋谷健児

(令和3年1月22日作成)

申請人

西和不動産株式会社
代表取締役 福島正義

縮尺

1

地番

307-1 ~ 307-186

地積測量図

土地の所在

大津市大平二丁目字別所

25/34

地番	㉑ 307-118			
NO	Xn	Yn	Yn+1-Yn-1	Xn · (Yn+1-Yn-1)
K322	-116031.425	-9282.241	15.027	-1743604.223475
Y217	-116019.999	-9276.005	-2.550	295850.997450
Y182	-116015.204	-9284.791	-15.027	1743360.470508
K321	-116026.617	-9291.032	2.550	-295867.873350
合計				-260.628867
合計面積				130.3144335
地積				130.31 m ²

地番	㉒ 307-122			
NO	Xn	Yn	Yn+1-Yn-1	Xn · (Yn+1-Yn-1)
Y217	-116019.999	-9276.005	2.527	-293182.537473
Y211	-116024.805	-9267.247	15.022	-1742924.620710
K329	-116013.410	-9260.983	-2.527	293165.887070
K330	-116008.603	-9269.774	-15.022	1742681.234266
合計				-260.036847
合計面積				130.0184235
地積				130.01 m ²

地番	㉓ 307-119			
NO	Xn	Yn	Yn+1-Yn-1	Xn · (Yn+1-Yn-1)
K321	-116026.617	-9291.032	12.370	-1435249.252290
Y182	-116015.204	-9284.791	-2.536	294214.557344
K332	-116010.421	-9293.568	-13.570	1574261.412970
S134	-116019.184	-9298.361	-3.593	416856.928112
S135	-116023.275	-9297.161	7.329	-850334.582475
合計				-250.936339
合計面積				125.4681695
地積				125.46 m ²

地番	㉔ 307-123			
NO	Xn	Yn	Yn+1-Yn-1	Xn · (Yn+1-Yn-1)
Y211	-116024.805	-9267.247	2.542	-294935.054310
Y266	-116029.610	-9258.441	15.024	-1743228.860640
K328	-116018.200	-9252.223	-2.542	294918.264400
K329	-116013.410	-9260.983	-15.024	1742985.471840
合計				-260.178710
合計面積				130.0893550
地積				130.08 m ²

地番	㉕ 307-120			
NO	Xn	Yn	Yn+1-Yn-1	Xn · (Yn+1-Yn-1)
K332	-116010.421	-9293.568	3.981	-461837.486001
Y182	-116015.204	-9284.791	15.012	-1741620.242448
K331	-116003.802	-9278.556	0.085	-9860.323170
S128	-116000.439	-9284.706	-10.216	1185060.484824
S129	-116001.653	-9288.772	-8.862	1028006.648886
合計				-250.917909
合計面積				125.4589545
地積				125.45 m ²

地番	㉖ 307-124			
NO	Xn	Yn	Yn+1-Yn-1	Xn · (Yn+1-Yn-1)
Y266	-116029.610	-9258.441	2.539	-294599.179790
Y265	-116034.415	-9249.684	14.997	-1740168.121755
K327	-116023.001	-9243.444	-2.539	294582.399539
K328	-116018.200	-9252.223	-14.997	1739924.945400
合計				-259.956606
合計面積				129.9783030
地積				129.97 m ²

地番	㉗ 307-121			
NO	Xn	Yn	Yn+1-Yn-1	Xn · (Yn+1-Yn-1)
Y182	-116015.204	-9284.791	2.551	-295954.785404
Y217	-116019.999	-9276.005	15.017	-1742272.324983
K330	-116008.603	-9269.774	-2.551	295937.946253
K331	-116003.802	-9278.556	-15.017	1742029.094634
合計				-260.069500
合計面積				130.0347500
地積				130.03 m ²

地番	㉘ 307-125			
NO	Xn	Yn	Yn+1-Yn-1	Xn · (Yn+1-Yn-1)
Y265	-116034.415	-9249.684	2.538	-294495.345270
K326	-116039.230	-9240.906	13.584	-1576276.900320
S242	-116030.445	-9236.100	3.622	-420262.271790
S241	-116026.369	-9237.284	-7.344	852097.653936
K327	-116023.001	-9243.444	-12.400	1438685.212400
合計				-251.651044
合計面積				125.8255220
地積				125.82 m ²

作成者

大津市京町二丁目3番14号201号室

土地家屋調査士

嶋谷健児

(令和3年1月22日作成)

申請人

西和不動産株式会社
代表取締役 福島正義

縮尺

1

地番

307-1 ~ 307-186

地積測量図

土地の所在

大津市大平二丁目字別所

26/34

地番 ㊟ 307-126				
NO	Xn	Yn	Yn+1-Yn-1	Xn · (Yn+1-Yn-1)
K351	-115986.307	-9295.642	-17.567	2037531.455069
K353	-115987.176	-9295.137	4.792	-555810.547392
J522	-115984.586	-9290.850	12.255	-1421391.101430
Y166	-115979.776	-9282.882	10.909	-1265223.376384
Y167	-115978.012	-9279.941	7.468	-866123.793616
S125	-115975.221	-9275.414	2.371	-274977.248991
K48	-115975.386	-9277.570	-20.228	2345950.108008
合計				-44.504736
合計面積				22.2523680
地積				22.25 m ²

地番 ㊟ 307-127				
NO	Xn	Yn	Yn+1-Yn-1	Xn · (Yn+1-Yn-1)
K406	-115992.762	-9306.324	-10.166	1179182.418492
K407	-115993.624	-9305.808	11.187	-1297620.671688
K353	-115987.176	-9295.137	10.166	-1179125.631216
K351	-115986.307	-9295.642	-11.187	1297538.816409
合計				-25.068003
合計面積				12.5340015
地積				12.53 m ²

地番 ㊟ 307-128				
NO	Xn	Yn	Yn+1-Yn-1	Xn · (Yn+1-Yn-1)
J524	-115998.462	-9315.755	-8.655	1003966.688610
K350	-115999.746	-9314.979	1.833	-212627.534418
Y192	-115999.106	-9313.922	0.804	-93263.281224
K355	-115998.681	-9314.175	8.114	-941213.297634
K407	-115993.624	-9305.808	7.851	-910665.942024
K406	-115992.762	-9306.324	-9.947	1153780.003614
合計				-23.363076
合計面積				11.6815380
地積				11.68 m ²

地番 ㊟ 307-129				
NO	Xn	Yn	Yn+1-Yn-1	Xn · (Yn+1-Yn-1)
J512	-116003.755	-9324.515	-7.959	923273.886045
J361	-116005.029	-9323.714	9.536	-1106223.956544
K350	-115999.746	-9314.979	7.959	-923241.978414
J524	-115998.462	-9315.755	-9.536	1106161.333632
合計				-30.715281
合計面積				15.3576405
地積				15.35 m ²

地番 ㊟ 307-130				
NO	Xn	Yn	Yn+1-Yn-1	Xn · (Yn+1-Yn-1)
K27	-116021.170	-9335.140	-2.798	324627.233660
K339	-116021.496	-9334.869	0.417	-48380.963832
Y231	-116021.478	-9334.723	4.097	-475339.995366
K338	-116019.898	-9330.772	3.179	-368827.255742
J357	-116017.973	-9331.544	0.684	-79356.293532
J356	-116013.851	-9330.088	5.145	-596891.263395
K346	-116010.721	-9326.399	7.773	-901751.334333
J362	-116007.255	-9322.315	2.685	-311479.479675
J361	-116005.029	-9323.714	-2.200	255211.063800
J512	-116003.755	-9324.515	-2.372	275160.906860
K52	-116004.704	-9326.086	-0.463	53710.177952
K26	-116006.466	-9324.978	-5.985	694298.699010
C9	-116012.485	-9332.071	-10.162	1178918.872570
合計				-99.632023
合計面積				49.8160115
地積				49.81 m ²

地番 ㊟ 307-131				
NO	Xn	Yn	Yn+1-Yn-1	Xn · (Yn+1-Yn-1)
Y232	-116019.431	-9329.604	-4.394	509789.379814
K338	-116019.898	-9330.772	-5.119	593905.857862
Y231	-116021.478	-9334.723	-4.097	475339.995366
K339	-116021.496	-9334.869	5.646	-655057.366416
K340	-116028.460	-9329.077	8.491	-985197.653860
Y233	-116027.378	-9326.378	-0.527	61146.428206
合計				-73.359028
合計面積				36.6795140
地積				36.67 m ²

地番 ㊟ 307-132				
NO	Xn	Yn	Yn+1-Yn-1	Xn · (Yn+1-Yn-1)
Y233	-116027.378	-9326.378	-4.120	478032.797360
K340	-116028.460	-9329.077	3.319	-385098.458740
K341	-116035.695	-9323.059	4.120	-478067.063400
A16	-116030.934	-9324.957	-3.319	385106.669946
合計				-26.054834
合計面積				13.0274170
地積				13.02 m ²

作成者

大津市京町二丁目3番14号201号室
土地家屋調査士 嶋谷健児

(令和3年1月22日作成)

申請人

西和不動産株式会社
代表取締役 福島正義

縮尺

1

地 番

307-1 ~ 307-186

地 積 測 量 図

土地の所在

大津市大平二丁目字別所

地 番 ㊦ 307-133				
NO	Xn	Yn	Yn+1-Yn-1	Xn · (Yn+1-Yn-1)
K345	-116040.855	-9305.694	-5.298	614784.449790
K344	-116035.110	-9316.186	-13.328	1546515.946080
Y196	-116040.313	-9319.022	-2.984	346264.293992
K343	-116040.372	-9319.170	8.134	-943872.385848
S140	-116050.347	-9310.888	13.476	-1563894.476172
合 計				-202.172158
合 計 面 積				101.0860790
地 積				101.08 m ²

地 番 ㊦ 307-134				
NO	Xn	Yn	Yn+1-Yn-1	Xn · (Yn+1-Yn-1)
S132	-116031.603	-9300.632	1.551	-179965.016253
Y206	-116029.720	-9304.143	-10.521	1220748.684120
Y205	-116025.876	-9311.153	-12.043	1397299.624668
K344	-116035.110	-9316.186	5.459	-633435.665490
K345	-116040.855	-9305.694	15.554	-1804899.458670
合 計				-251.831625
合 計 面 積				125.9158125
地 積				125.91 m ²

地 番 ㊦ 307-135				
NO	Xn	Yn	Yn+1-Yn-1	Xn · (Yn+1-Yn-1)
Y205	-116025.876	-9311.153	12.043	-1397299.624668
Y206	-116029.720	-9304.143	10.521	-1220748.684120
S132	-116031.603	-9300.632	2.335	-270933.793005
S170	-116027.586	-9301.808	-7.315	848741.791590
S133	-116024.213	-9307.947	-16.428	1906045.771164
Y199	-116018.597	-9318.236	-17.010	1973476.334970
A16	-116030.934	-9324.957	-4.823	559617.194682
K341	-116035.695	-9323.059	5.787	-671498.566965
K343	-116040.372	-9319.170	4.037	-468454.981764
Y196	-116040.313	-9319.022	2.984	-346264.293992
K344	-116035.110	-9316.186	7.869	-913080.280590
合 計				-399.132698
合 計 面 積				199.5663490
地 積				199.56 m ²

地 番 ㊦ 307-136				
NO	Xn	Yn	Yn+1-Yn-1	Xn · (Yn+1-Yn-1)
Y199	-116018.597	-9318.236	17.010	-1973476.334970
S133	-116024.213	-9307.947	11.730	-1360964.018490
K347	-116021.578	-9306.506	-18.452	2140830.157256
K346	-116010.721	-9326.399	-23.582	2735764.822622
J356	-116013.851	-9330.088	-5.145	596891.263395
J357	-116017.973	-9331.544	-0.684	79356.293532
K338	-116019.898	-9330.772	1.940	-225078.602120
Y232	-116019.431	-9329.604	4.394	-509789.379814
Y233	-116027.378	-9326.378	4.647	-539179.225566
A16	-116030.934	-9324.957	8.142	-944723.864628
合 計				-368.888783
合 計 面 積				184.4443915
地 積				184.44 m ²

地 番 ㊦ 307-137				
NO	Xn	Yn	Yn+1-Yn-1	Xn · (Yn+1-Yn-1)
K346	-116010.721	-9326.399	15.809	-1834013.488289
K347	-116021.578	-9306.506	21.334	-2475204.345052
K348	-116018.943	-9305.065	-7.354	853203.306822
Y202	-116014.143	-9313.860	-10.276	1192161.333468
Y203	-116013.311	-9315.341	3.674	-426232.904614
Y194	-116003.833	-9310.186	3.784	-438958.504072
Y193	-116003.088	-9311.557	-3.736	433387.536768
Y192	-115999.106	-9313.922	-3.422	396948.940732
K350	-115999.746	-9314.979	-9.792	1135869.512832
J361	-116005.029	-9323.714	-7.336	851012.892744
J362	-116007.255	-9322.315	-2.685	311479.479675
合 計				-346.238986
合 計 面 積				173.1194930
地 積				173.11 m ²

地 番 ㊦ 307-138				
NO	Xn	Yn	Yn+1-Yn-1	Xn · (Yn+1-Yn-1)
K349	-116009.474	-9299.888	-5.121	594084.516354
Y194	-116003.833	-9310.186	-15.453	1792607.231349
Y203	-116013.311	-9315.341	-3.674	426232.904614
Y202	-116014.143	-9313.860	10.276	-1192161.333468
K348	-116018.943	-9305.065	13.972	-1621016.671596
合 計				-253.352747
合 計 面 積				126.6763735
地 積				126.67 m ²

作成者 大津市京町二丁目3番14号201号室
土地家屋調査士 嶋谷健児 (令和 3 年 1 月 22 日作成)

申請人 西和不動産株式会社
代表取締役 福島正義

縮尺 1

地番

307-1 ~ 307-186

地積測量図

土地の所在

大津市大平二丁目字別所

28/34

地番	㊦ 307-139				
NO	Xn	Yn	Yn+1-Yn-1	Xn · (Yn+1-Yn-1)	
Y194	-116003.833	-9310.186	11.669	-1353648.727277	
K349	-116009.474	-9299.888	14.447	-1675988.870878	
K356	-116001.886	-9295.739	-3.397	394058.406742	
Y188	-115997.830	-9303.285	-10.069	1167982.150270	
K407	-115993.624	-9305.808	-10.890	1263170.565360	
K355	-115998.681	-9314.175	-8.114	941213.297634	
Y192	-115999.106	-9313.922	2.618	-303685.659508	
Y193	-116003.088	-9311.557	3.736	-433387.536768	
合計				-286.374425	
合計面積				143.1872125	
地積				143.18 m ²	

地番	㊦ 307-140				
NO	Xn	Yn	Yn+1-Yn-1	Xn · (Yn+1-Yn-1)	
S130	-115990.853	-9289.706	8.648	-1003088.896744	
K357	-115992.284	-9287.091	3.039	-352500.551076	
J523	-115991.508	-9286.667	-3.759	436012.078572	
J522	-115984.586	-9290.850	-8.470	982389.443420	
K353	-115987.176	-9295.137	-14.958	1734936.178608	
K407	-115993.624	-9305.808	-8.148	945116.048352	
Y188	-115997.830	-9303.285	10.069	-1167982.150270	
K356	-116001.886	-9295.739	13.579	-1575189.609994	
合計				-307.459132	
合計面積				153.7295660	
地積				153.72 m ²	

地番	㊦ 307-141				
NO	Xn	Yn	Yn+1-Yn-1	Xn · (Yn+1-Yn-1)	
Y168	-115983.043	-9276.891	3.187	-369637.958041	
Y167	-115978.012	-9279.941	-5.991	694824.269892	
Y166	-115979.776	-9282.882	-10.909	1265223.376384	
J522	-115984.586	-9290.850	-3.785	439001.658010	
J523	-115991.508	-9286.667	3.759	-436012.078572	
K357	-115992.284	-9287.091	3.539	-410496.693076	
K358	-115994.451	-9283.128	10.200	-1183143.400200	
合計				-240.825603	
合計面積				120.4128015	
地積				120.41 m ²	

地番	㊦ 307-142				
NO	Xn	Yn	Yn+1-Yn-1	Xn · (Yn+1-Yn-1)	
Y168	-115983.043	-9276.891	-11.527	1336936.536661	
K358	-115994.451	-9283.128	2.305	-267367.209555	
K359	-115999.123	-9274.586	14.755	-1711567.059865	
Y170	-115987.680	-9268.373	2.985	-346223.224800	
Y169	-115985.906	-9271.601	-8.518	987967.947308	
合計				-253.010251	
合計面積				126.5051255	
地積				126.50 m ²	

地番	㊦ 307-143				
NO	Xn	Yn	Yn+1-Yn-1	Xn · (Yn+1-Yn-1)	
Y170	-115987.680	-9268.373	-14.734	1708962.477120	
K359	-115999.123	-9274.586	2.271	-263434.008333	
K360	-116003.763	-9266.102	13.268	-1539137.927484	
Y174	-115995.073	-9261.318	6.250	-724969.206250	
Y175	-115992.356	-9259.852	-7.055	818326.071580	
合計				-252.593367	
合計面積				126.2966835	
地積				126.29 m ²	

地番	㊦ 307-144				
NO	Xn	Yn	Yn+1-Yn-1	Xn · (Yn+1-Yn-1)	
Y175	-115992.356	-9259.852	-9.961	1155399.858116	
Y174	-115995.073	-9261.318	-6.250	724969.206250	
K360	-116003.763	-9266.102	3.742	-434086.081146	
K361	-116008.427	-9257.576	14.745	-1710544.256115	
Y401	-115997.020	-9251.357	-2.276	264009.217520	
合計				-252.055375	
合計面積				126.0276875	
地積				126.02 m ²	

地番	㊦ 307-145				
NO	Xn	Yn	Yn+1-Yn-1	Xn · (Yn+1-Yn-1)	
Y401	-115997.020	-9251.357	-14.756	1711652.027120	
K361	-116008.427	-9257.576	2.285	-265079.255695	
K362	-116013.078	-9249.072	14.756	-1711888.978968	
Y398	-116001.675	-9242.820	-2.285	265063.827375	
合計				-252.380168	
合計面積				126.1900840	
地積				126.19 m ²	

作成者

大津市京町二丁目3番14号201号室
土地家屋調査士 嶋谷健児

(令和3年1月22日作成)

申請人

西和不動産株式会社
代表取締役 福島正義

縮尺

1

地 番 307-1 ~ 307-186

地 積 測 量 図

土地の所在 大津市大平二丁目字別所

地 番	㊦ 307-146				
NO	Xn	Yn	Yn+1-Yn-1	Xn · (Yn+1-Yn-1)	
Y432	-116006.326	-9234.316	-2.265	262754.328390	
Y398	-116001.675	-9242.820	-14.756	1711720.716300	
K362	-116013.078	-9249.072	2.265	-262769.621670	
K403	-116017.736	-9240.555	14.756	-1711957.712416	
合 計				-252.289396	
合 計 面 積				126.1446980	
地 積				126.14 m ²	

地 番	㊧ 307-150				
NO	Xn	Yn	Yn+1-Yn-1	Xn · (Yn+1-Yn-1)	
K363	-115990.268	-9236.583	-2.274	263761.869432	
K364	-115985.611	-9245.094	-14.774	1713571.416914	
Y401	-115997.020	-9251.357	2.274	-263777.223480	
Y398	-116001.675	-9242.820	14.774	-1713808.746450	
合 計				-252.683584	
合 計 面 積				126.3417920	
地 積				126.34 m ²	

地 番	㊨ 307-147				
NO	Xn	Yn	Yn+1-Yn-1	Xn · (Yn+1-Yn-1)	
Y432	-116006.326	-9234.316	-15.011	1741370.959586	
K403	-116017.736	-9240.555	-0.108	12529.915488	
S240	-116021.089	-9234.424	10.230	-1186895.740470	
S239	-116019.894	-9230.325	8.880	-1030256.658720	
K404	-116011.143	-9225.544	-3.991	463000.471713	
合 計				-251.052403	
合 計 面 積				125.5262015	
地 積				125.52 m ²	

地 番	㊩ 307-151				
NO	Xn	Yn	Yn+1-Yn-1	Xn · (Yn+1-Yn-1)	
K364	-115985.611	-9245.094	-2.242	260039.739862	
K365	-115980.957	-9253.599	-14.758	1711646.963406	
Y175	-115992.356	-9259.852	2.242	-260054.862152	
Y401	-115997.020	-9251.357	14.758	-1711884.021160	
合 計				-252.180044	
合 計 面 積				126.0900220	
地 積				126.09 m ²	

地 番	㊪ 307-148				
NO	Xn	Yn	Yn+1-Yn-1	Xn · (Yn+1-Yn-1)	
Y432	-116006.326	-9234.316	2.552	-296048.143952	
K404	-116011.143	-9225.544	13.581	-1575547.333083	
S238	-116002.342	-9220.735	3.625	-420508.489750	
S237	-115998.292	-9221.919	-7.361	853863.427412	
K405	-115994.912	-9228.096	-12.397	1437988.924064	
合 計				-251.615309	
合 計 面 積				125.8076545	
地 積				125.80 m ²	

地 番	㊫ 307-152				
NO	Xn	Yn	Yn+1-Yn-1	Xn · (Yn+1-Yn-1)	
Y175	-115992.356	-9259.852	14.774	-1713671.067544	
K365	-115980.957	-9253.599	0.848	-98351.851536	
S120	-115978.000	-9259.004	-8.145	944640.810000	
K402	-115975.642	-9261.744	-9.369	1086575.789898	
Y170	-115987.680	-9268.373	1.892	-219448.690560	
合 計				-255.009742	
合 計 面 積				127.5048710	
地 積				127.50 m ²	

地 番	㊬ 307-149				
NO	Xn	Yn	Yn+1-Yn-1	Xn · (Yn+1-Yn-1)	
Y398	-116001.675	-9242.820	2.267	-262975.797225	
Y432	-116006.326	-9234.316	14.724	-1708077.144024	
K405	-115994.912	-9228.096	-2.267	262960.465504	
K363	-115990.268	-9236.583	-14.724	1707840.706032	
合 計				-251.769713	
合 計 面 積				125.8848565	
地 積				125.88 m ²	

地 番	㊭ 307-153				
NO	Xn	Yn	Yn+1-Yn-1	Xn · (Yn+1-Yn-1)	
Y170	-115987.680	-9268.373	9.857	-1143290.561760	
K402	-115975.642	-9261.744	3.730	-432589.144660	
S121	-115973.147	-9264.643	-7.564	877220.883908	
S122	-115973.003	-9269.308	-6.778	786065.014334	
S123	-115974.136	-9271.421	-4.327	501820.086472	
S124	-115974.883	-9273.635	-3.993	463087.707819	
S125	-115975.221	-9275.414	-6.306	731339.743626	
Y167	-115978.012	-9279.941	-1.477	171299.523724	
Y168	-115983.043	-9276.891	8.340	-967298.578620	
Y169	-115985.906	-9271.601	8.518	-987967.947308	
合 計				-313.272465	
合 計 面 積				156.6362325	
地 積				156.63 m ²	

作成者 大津市京町二丁目3番14号201号室
土地家屋調査士 嶋谷健児 (令和 3 年 1 月 22 日作成)

申請人 西和不動産株式会社
代表取締役 福島正義

縮尺 1/

地 番

307-1 ~ 307-186

地 積 測 量 図

土地の所在

大津市大平二丁目字別所

地 番 ㊦ 307-154				
NO	Xn	Yn	Yn+1-Yn-1	Xn · (Yn+1-Yn-1)
Y147	-115966.886	-9245.932	-9.496	1101221.549456
Y443	-115959.098	-9260.200	-15.307	1774985.913086
Y444	-115962.857	-9261.239	-1.528	177191.245496
Y163	-115963.897	-9261.728	0.586	-67954.843642
S126	-115968.642	-9260.653	6.208	-719933.329536
S127	-115973.064	-9255.520	9.949	-1153816.013736
K367	-115975.697	-9250.704	9.588	-1111974.982836
合 計				-280.461712
合 計 面 積				140.2308560
地 積				140.23 m ²

地 番 ㊦ 307-157				
NO	Xn	Yn	Yn+1-Yn-1	Xn · (Yn+1-Yn-1)
Y134	-115946.773	-9249.336	11.561	-1340460.642653
S113	-115949.544	-9244.284	9.332	-1082041.144608
K376	-115941.655	-9240.004	-0.240	27825.997200
Y132	-115939.157	-9244.524	-13.357	1548599.320049
Y439	-115934.346	-9253.361	-9.010	1044568.457460
Y440	-115934.810	-9253.534	-2.484	287982.068040
Y441	-115943.249	-9255.845	4.198	-486729.759302
合 計				-255.703814
合 計 面 積				127.8519070
地 積				127.85 m ²

地 番 ㊦ 307-155				
NO	Xn	Yn	Yn+1-Yn-1	Xn · (Yn+1-Yn-1)
Y443	-115959.098	-9260.200	12.090	-1401945.494820
Y147	-115966.886	-9245.932	15.722	-1823231.381692
Y138	-115964.266	-9244.478	5.902	-684421.097932
Y136	-115956.117	-9240.030	5.244	-608073.877548
S115	-115954.708	-9239.234	1.812	-210109.930896
S114	-115952.855	-9238.218	-1.646	190858.399330
K375	-115951.402	-9240.880	-6.507	754495.772814
P1	-115958.445	-9244.725	-17.142	1987759.664190
Y442	-115951.171	-9258.022	-15.475	1794344.371225
合 計				-323.575329
合 計 面 積				161.7876645
地 積				161.78 m ²

地 番 ㊦ 307-158				
NO	Xn	Yn	Yn+1-Yn-1	Xn · (Yn+1-Yn-1)
Y132	-115939.157	-9244.524	13.357	-1548599.320049
K376	-115941.655	-9240.004	8.811	-1021561.922205
K377	-115933.802	-9235.713	-9.465	1097313.435930
Y437	-115926.306	-9249.469	-15.888	1841837.149728
Y438	-115929.600	-9251.601	-3.892	451198.003200
Y439	-115934.346	-9253.361	7.077	-820467.366642
合 計				-280.020038
合 計 面 積				140.0100190
地 積				140.01 m ²

地 番 ㊦ 307-156				
NO	Xn	Yn	Yn+1-Yn-1	Xn · (Yn+1-Yn-1)
P1	-115958.445	-9244.725	17.142	-1987759.664190
K375	-115951.402	-9240.880	0.441	-51134.568282
S113	-115949.544	-9244.284	-8.456	980469.344064
Y134	-115946.773	-9249.336	-11.561	1340460.642653
Y441	-115943.249	-9255.845	-8.686	1007083.060814
Y442	-115951.171	-9258.022	11.120	-1289377.021520
合 計				-258.206461
合 計 面 積				129.1032305
地 積				129.10 m ²

地 番 ㊦ 307-159				
NO	Xn	Yn	Yn+1-Yn-1	Xn · (Yn+1-Yn-1)
Y437	-115926.306	-9249.469	13.303	-1542167.648718
K377	-115933.802	-9235.713	18.306	-2122284.179412
K378	-115925.475	-9231.163	-6.901	800001.702975
Y435	-115919.217	-9242.614	-14.238	1650457.811646
Y436	-115921.646	-9245.401	-6.402	742130.377692
Y445	-115925.609	-9249.016	-4.068	471585.377412
合 計				-276.558405
合 計 面 積				138.2792025
地 積				138.27 m ²

地 番 ㊦ 307-160				
NO	Xn	Yn	Yn+1-Yn-1	Xn · (Yn+1-Yn-1)
Y435	-115919.217	-9242.614	1.750	-202858.629750
K378	-115925.475	-9231.163	16.542	-1917639.207450
S109	-115916.160	-9226.072	5.995	-694917.379200
Y115	-115914.494	-9225.168	-6.558	760167.251652
Y433	-115910.423	-9232.630	-7.745	897726.226135
Y434	-115910.757	-9232.913	-9.984	1157252.997888
合 計				-268.740725
合 計 面 積				134.3703625
地 積				134.37 m ²

作成者 大津市京町二丁目3番14号201号室
土地家屋調査士 嶋谷健児 (令和 3 年 1 月 22 日作成)

申請人 西和不動産株式会社
代表取締役 福島正義

縮尺 1/

地 番

307-1 ~ 307-186

地 積 測 量 図

土地の所在

大津市大平二丁目字別所

地 番	㊦ 307-161			
NO	Xn	Yn	Yn+1-Yn-1	Xn · (Yn+1-Yn-1)
Y115	-115914.494	-9225.168	6.558	-760167.251652
S109	-115916.160	-9226.072	1.733	-200882.705280
S112	-115917.593	-9223.435	9.151	-1060761.893543
Y114	-115905.667	-9216.921	-0.901	104431.005967
S104	-115901.624	-9224.336	-8.715	1010082.653160
Y110	-115901.890	-9225.636	-8.294	961290.275660
Y433	-115910.423	-9232.630	0.468	-54246.077964
合 計				-253.993652
合 計 面 積				126.9968260
地 積				126.99 m ²

地 番	㊦ 307-162			
NO	Xn	Yn	Yn+1-Yn-1	Xn · (Yn+1-Yn-1)
S102	-115899.537	-9221.882	7.156	-829377.086772
K65	-115902.911	-9215.687	0.852	-98749.280172
K66	-115899.903	-9221.030	-7.490	868090.273470
S31	-115898.721	-9223.177	-2.557	296353.029597
K67	-115899.389	-9223.587	-9.762	1131409.835418
K106	-115910.737	-9232.939	-21.871	2535083.728927
K107	-115921.645	-9245.458	-16.067	1862513.070215
K108	-115925.522	-9249.006	-6.166	714796.768652
K71	-115929.594	-9251.624	-4.541	526436.286354
K72	-115934.788	-9253.547	-9.641	1117727.291108
K73	-115962.847	-9261.265	-8.191	949851.679777
K366	-115963.851	-9261.738	-0.463	53691.263013
Y163	-115963.897	-9261.728	0.499	-57865.984603
Y444	-115962.857	-9261.239	1.528	-177191.245496
Y443	-115959.098	-9260.200	3.217	-373040.418266
Y442	-115951.171	-9258.022	4.355	-504967.349705
Y441	-115943.249	-9255.845	4.488	-520353.301512
Y440	-115934.810	-9253.534	2.484	-287982.068040
Y439	-115934.346	-9253.361	1.933	-224101.090818
Y438	-115929.600	-9251.601	3.892	-451198.003200
Y437	-115926.306	-9249.469	2.585	-299669.501010
Y445	-115925.609	-9249.016	4.068	-471585.377412
Y436	-115921.646	-9245.401	6.402	-742130.377692
Y435	-115919.217	-9242.614	12.488	-1447599.181896
Y434	-115910.757	-9232.913	9.984	-1157252.997888
Y433	-115910.423	-9232.630	7.277	-843480.148171
Y110	-115901.890	-9225.636	8.294	-961290.275660
S104	-115901.624	-9224.336	2.793	-323713.235832
S103	-115901.317	-9222.843	2.454	-284421.831918
合 計				-15.529532
合 計 面 積				7.7647660
地 積				7.76 m ²

地 番	㊦ 307-163			
NO	Xn	Yn	Yn+1-Yn-1	Xn · (Yn+1-Yn-1)
S100	-115904.453	-9212.830	4.375	-507081.981875
K64	-115906.194	-9209.357	-2.857	331143.996258
K65	-115902.911	-9215.687	-4.375	507075.235625
S101	-115904.004	-9213.732	2.857	-331137.739428
合 計				-0.489420
合 計 面 積				0.2447100
地 積				0.24 m ²

地 番	㊦ 307-164			
NO	Xn	Yn	Yn+1-Yn-1	Xn · (Yn+1-Yn-1)
S112	-115917.593	-9223.435	-3.870	448601.084910
S108	-115919.040	-9220.791	5.149	-596867.136960
S105	-115914.434	-9218.286	7.961	-922794.809074
S100	-115904.453	-9212.830	4.554	-527828.878962
S101	-115904.004	-9213.732	-2.857	331137.739428
K65	-115902.911	-9215.687	-8.150	944608.724650
S102	-115899.537	-9221.882	-7.156	829377.086772
S103	-115901.317	-9222.843	-2.454	284421.831918
S104	-115901.624	-9224.336	5.922	-686369.417328
Y114	-115905.667	-9216.921	0.901	-104431.005967
合 計				-144.780613
合 計 面 積				72.3903065
地 積				72.39 m ²

地 番	㊦ 307-165			
NO	Xn	Yn	Yn+1-Yn-1	Xn · (Yn+1-Yn-1)
S106	-115917.767	-9212.177	-3.597	416956.207899
S105	-115914.434	-9218.286	-8.614	998486.934476
S108	-115919.040	-9220.791	3.597	-416960.786880
S107	-115922.369	-9214.689	8.614	-998555.286566
合 計				-72.931071
合 計 面 積				36.4655355
地 積				36.46 m ²

地 番	㊦ 307-166			
NO	Xn	Yn	Yn+1-Yn-1	Xn · (Yn+1-Yn-1)
J430	-115909.458	-9204.173	4.800	-556365.398400
K63	-115907.257	-9207.227	-5.184	600863.220288
K64	-115906.194	-9209.357	-5.603	649422.404982
S100	-115904.453	-9212.830	-8.929	1034910.860837
S105	-115914.434	-9218.286	0.653	-75692.125402
S106	-115917.767	-9212.177	3.597	-416956.207899
S107	-115922.369	-9214.689	0.150	-17388.355350
K379	-115923.823	-9212.027	10.516	-1219054.922668
合 計				-260.523612
合 計 面 積				130.2618060
地 積				130.26 m ²

作成者 大津市京町二丁目3番14号201号室
土地家屋調査士 嶋谷健児 (令和 3 年 1 月 22 日作成)

申請人 西和不動産株式会社
代表取締役 福島正義

縮尺 1/

地番

307-1 ~ 307-186

地積測量図

土地の所在

大津市大平二丁目字別所

32/34

地番 ㊦ 307-167				
NO	Xn	Yn	Yn+1-Yn-1	Xn・(Yn+1-Yn-1)
J430	-115909.458	-9204.173	-10.675	1237333.464150
K379	-115923.823	-9212.027	0.049	-5680.267327
K380	-115928.139	-9204.124	15.147	-1755963.521433
J436	-115914.890	-9196.880	2.772	-321316.075080
K62	-115911.490	-9201.352	-7.293	845342.496570
合計				-283.903120
合計面積				141.9515600
地積				141.95 m ²

地番 ㊦ 307-171				
NO	Xn	Yn	Yn+1-Yn-1	Xn・(Yn+1-Yn-1)
K401	-115950.096	-9203.586	15.018	-1741338.541728
K395	-115938.692	-9197.351	-2.550	295643.664600
K396	-115933.904	-9206.136	-15.018	1741095.370272
K400	-115945.305	-9212.369	2.550	-295660.527750
合計				-260.034606
合計面積				130.0173030
地積				130.01 m ²

地番 ㊦ 307-168				
NO	Xn	Yn	Yn+1-Yn-1	Xn・(Yn+1-Yn-1)
J436	-115914.890	-9196.880	-7.662	888139.887180
K380	-115928.139	-9204.124	1.098	-127289.096622
K381	-115932.695	-9195.782	14.905	-1727976.818975
J438	-115920.693	-9189.219	-0.680	78826.071240
K61	-115915.208	-9196.462	-7.661	888026.408488
合計				-273.548689
合計面積				136.7743445
地積				136.77 m ²

地番 ㊦ 307-172				
NO	Xn	Yn	Yn+1-Yn-1	Xn・(Yn+1-Yn-1)
K400	-115945.305	-9212.369	15.018	-1741266.590490
K396	-115933.904	-9206.136	-2.547	295283.653488
K397	-115929.107	-9214.916	-15.018	1741023.328926
K399	-115940.517	-9221.154	2.547	-295300.496799
合計				-260.104875
合計面積				130.0524375
地積				130.05 m ²

地番 ㊦ 307-169				
NO	Xn	Yn	Yn+1-Yn-1	Xn・(Yn+1-Yn-1)
J438	-115920.693	-9189.219	-12.672	1468947.021696
K381	-115932.695	-9195.782	0.898	-104107.560110
S225	-115936.770	-9188.321	11.549	-1338953.756730
S224	-115935.562	-9184.233	6.497	-753233.346314
S223	-115931.234	-9181.824	1.123	-130190.775782
K382	-115925.319	-9183.110	-7.395	857267.734005
合計				-270.683235
合計面積				135.3416175
地積				135.34 m ²

地番 ㊦ 307-173				
NO	Xn	Yn	Yn+1-Yn-1	Xn・(Yn+1-Yn-1)
K399	-115940.517	-9221.154	15.007	-1739919.338619
K397	-115929.107	-9214.916	0.105	-12172.556235
S111	-115925.755	-9221.049	-10.207	1183254.181285
S110	-115926.953	-9225.123	-8.874	1028735.780922
K398	-115935.740	-9229.923	3.969	-460148.952060
合計				-250.884707
合計面積				125.4423535
地積				125.44 m ²

地番 ㊦ 307-170				
NO	Xn	Yn	Yn+1-Yn-1	Xn・(Yn+1-Yn-1)
S227	-115946.150	-9190.012	3.588	-416014.786200
S226	-115942.048	-9191.194	-7.339	850898.690272
K395	-115938.692	-9197.351	-12.392	1436712.271264
K401	-115950.096	-9203.586	2.569	-297875.796624
K394	-115954.903	-9194.782	13.574	-1573971.853322
合計				-251.474610
合計面積				125.7373050
地積				125.73 m ²

地番 ㊦ 307-174				
NO	Xn	Yn	Yn+1-Yn-1	Xn・(Yn+1-Yn-1)
K399	-115940.517	-9221.154	-2.532	293561.389044
K398	-115935.740	-9229.923	-13.565	1572668.313100
S119	-115944.519	-9234.719	-3.589	416124.878691
S118	-115948.584	-9233.512	7.328	-849671.223552
K391	-115951.923	-9227.391	12.358	-1432933.864434
合計				-250.507151
合計面積				125.2535755
地積				125.25 m ²

作成者

大津市京町二丁目3番14号201号室
土地家屋調査士 嶋谷健児

(令和 3 年 1 月 22 日作成)

申請人

西和不動産株式会社
代表取締役 福島正義

縮尺

1

地番

307-1 ~ 307-186

地積測量図

土地の所在

大津市大平二丁目字別所

33/34

地番	㊦ 307-175				
NO	Xn	Yn	Yn+1-Yn-1	Xn · (Yn+1-Yn-1)	
K400	-115945.305	-9212.369	-2.546	295196.746530	
K399	-115940.517	-9221.154	-15.022	1741658.446374	
K391	-115951.923	-9227.391	2.546	-295213.595958	
K392	-115956.715	-9218.608	15.022	-1741901.772730	
合計				-260.175784	
合計面積				130.0878920	
地積				130.08 m ²	

地番	㊦ 307-179				
NO	Xn	Yn	Yn+1-Yn-1	Xn · (Yn+1-Yn-1)	
Y384	-115978.232	-9218.949	14.794	-1715781.964208	
K372	-115966.789	-9212.682	-2.266	262780.743874	
K373	-115962.134	-9221.215	-14.794	1715543.810396	
Y152	-115973.585	-9227.476	2.266	-262796.143610	
合計				-253.553548	
合計面積				126.7767740	
地積				126.77 m ²	

地番	㊦ 307-176				
NO	Xn	Yn	Yn+1-Yn-1	Xn · (Yn+1-Yn-1)	
K401	-115950.096	-9203.586	-2.544	294977.044224	
K400	-115945.305	-9212.369	-15.022	1741730.371710	
K392	-115956.715	-9218.608	2.544	-294993.882960	
K393	-115961.507	-9209.825	15.022	-1741973.758154	
合計				-260.225180	
合計面積				130.1125900	
地積				130.11 m ²	

地番	㊦ 307-180				
NO	Xn	Yn	Yn+1-Yn-1	Xn · (Yn+1-Yn-1)	
Y152	-115973.585	-9227.476	14.778	-1713857.639130	
K373	-115962.134	-9221.215	-2.263	262422.309242	
K374	-115957.485	-9229.739	-14.778	1713619.713330	
Y149	-115968.925	-9235.993	2.263	-262437.677275	
合計				-253.293833	
合計面積				126.6469165	
地積				126.64 m ²	

地番	㊦ 307-177				
NO	Xn	Yn	Yn+1-Yn-1	Xn · (Yn+1-Yn-1)	
K394	-115954.903	-9194.782	-4.028	467066.349284	
K401	-115950.096	-9203.586	-15.043	1744237.294128	
K393	-115961.507	-9209.825	-0.069	8001.343983	
S232	-115964.874	-9203.655	10.267	-1190611.361358	
S231	-115963.668	-9199.558	8.873	-1028945.626164	
合計				-252.000127	
合計面積				126.0000635	
地積				126.00 m ²	

地番	㊦ 307-181				
NO	Xn	Yn	Yn+1-Yn-1	Xn · (Yn+1-Yn-1)	
S115	-115954.708	-9239.234	-2.557	296496.188356	
Y136	-115956.117	-9240.030	-5.244	608073.877548	
Y138	-115964.266	-9244.478	4.037	-468147.741842	
Y149	-115968.925	-9235.993	14.739	-1709265.985575	
K374	-115957.485	-9229.739	-0.469	54384.060465	
S117	-115953.817	-9236.462	-7.734	896786.820678	
S116	-115955.660	-9237.473	-2.772	321429.089520	
合計				-243.690850	
合計面積				121.8454250	
地積				121.84 m ²	

地番	㊦ 307-178				
NO	Xn	Yn	Yn+1-Yn-1	Xn · (Yn+1-Yn-1)	
S233	-115970.123	-9206.570	-7.309	847625.629007	
K372	-115966.789	-9212.682	-12.379	1435552.881031	
Y384	-115978.232	-9218.949	2.513	-291453.297016	
K371	-115983.048	-9210.169	13.576	-1574585.859648	
S234	-115974.281	-9205.373	3.599	-417391.437319	
合計				-252.083945	
合計面積				126.0419725	
地積				126.04 m ²	

地番	㊦ 307-182				
NO	Xn	Yn	Yn+1-Yn-1	Xn · (Yn+1-Yn-1)	
S114	-115952.855	-9238.218	-2.772	321421.314060	
S115	-115954.708	-9239.234	0.745	-86386.257460	
S116	-115955.660	-9237.473	2.772	-321429.089520	
S117	-115953.817	-9236.462	-0.745	86385.593665	
合計				-8.439255	
合計面積				4.2196275	
地積				4.21 m ²	

作成者

大津市京町二丁目3番14号201号室
土地家屋調査士 嶋谷健児

(令和3年1月22日作成)

申請人

西和不動産株式会社
代表取締役 福島正義

縮尺

1

地 番 307-1 ~ 307-186

地 積 測 量 図

土地の所在 大津市大平二丁目字別所

地 番 ㊦ 307-183				
NO	Xn	Yn	Yn+1-Yn-1	Xn · (Yn+1-Yn-1)
Y147	-115966.886	-9245.932	-6.226	722009.832236
K367	-115975.697	-9250.704	3.721	-431545.568537
K368	-115980.340	-9242.211	14.711	-1706186.781740
Y149	-115968.925	-9235.993	-2.267	262901.552975
Y138	-115964.266	-9244.478	-9.939	1152568.839774
合 計				-252.125292
合 計 面 積				126.0626460
地 積				126.06 m ²

地 番 ㊦ 307-184				
NO	Xn	Yn	Yn+1-Yn-1	Xn · (Yn+1-Yn-1)
Y152	-115973.585	-9227.476	-2.295	266159.377575
Y149	-115968.925	-9235.993	-14.735	1708802.109875
K368	-115980.340	-9242.211	2.295	-266174.880300
K369	-115984.994	-9233.698	14.735	-1709038.886590
合 計				-252.279440
合 計 面 積				126.1397200
地 積				126.13 m ²

地 番 ㊦ 307-185				
NO	Xn	Yn	Yn+1-Yn-1	Xn · (Yn+1-Yn-1)
Y384	-115978.232	-9218.949	-2.292	265822.107744
Y152	-115973.585	-9227.476	-14.749	1710494.405165
K369	-115984.994	-9233.698	2.292	-265837.606248
K370	-115989.656	-9225.184	14.749	-1710731.436344
合 計				-252.529683
合 計 面 積				126.2648415
地 積				126.26 m ²

地 番 ㊦ 307-186				
NO	Xn	Yn	Yn+1-Yn-1	Xn · (Yn+1-Yn-1)
K371	-115983.048	-9210.169	-3.991	462888.344568
Y384	-115978.232	-9218.949	-15.015	1741413.153480
K370	-115989.656	-9225.184	-0.112	12990.841472
S236	-115993.009	-9219.061	10.226	-1186144.510034
S235	-115991.799	-9214.958	8.892	-1031399.076708
合 計				-251.247222
合 計 面 積				125.6236110
地 積				125.62 m ²

総合計面積 28951.2840970 m²

作成者 大津市京町二丁目3番14号201号室
土地家屋調査士 嶋谷健児 (令和 3 年 1 月 22 日作成)

申請人 西和不動産株式会社
代表取締役 福島正義

縮尺 1/